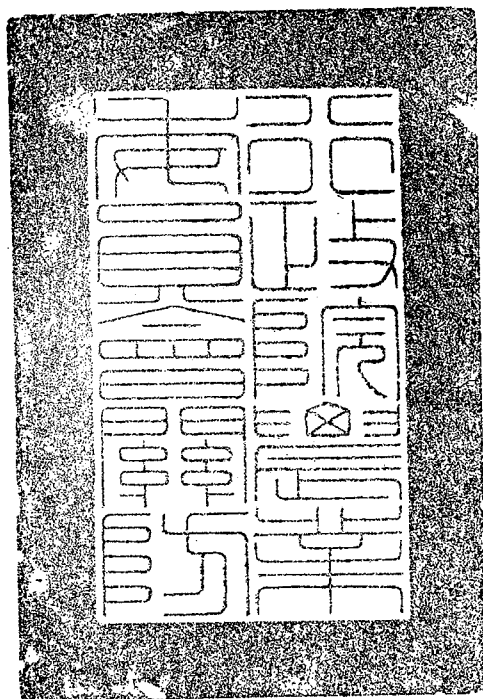


檔 號：  
保存年限：

## 行政院農業委員會 公告

發文日期：中華民國101年6月22日  
發文字號：農防字第1011490632號  
附件：如文



主旨：預告修正「中華民國輸入植物或植物產品檢疫規定」部分規定。

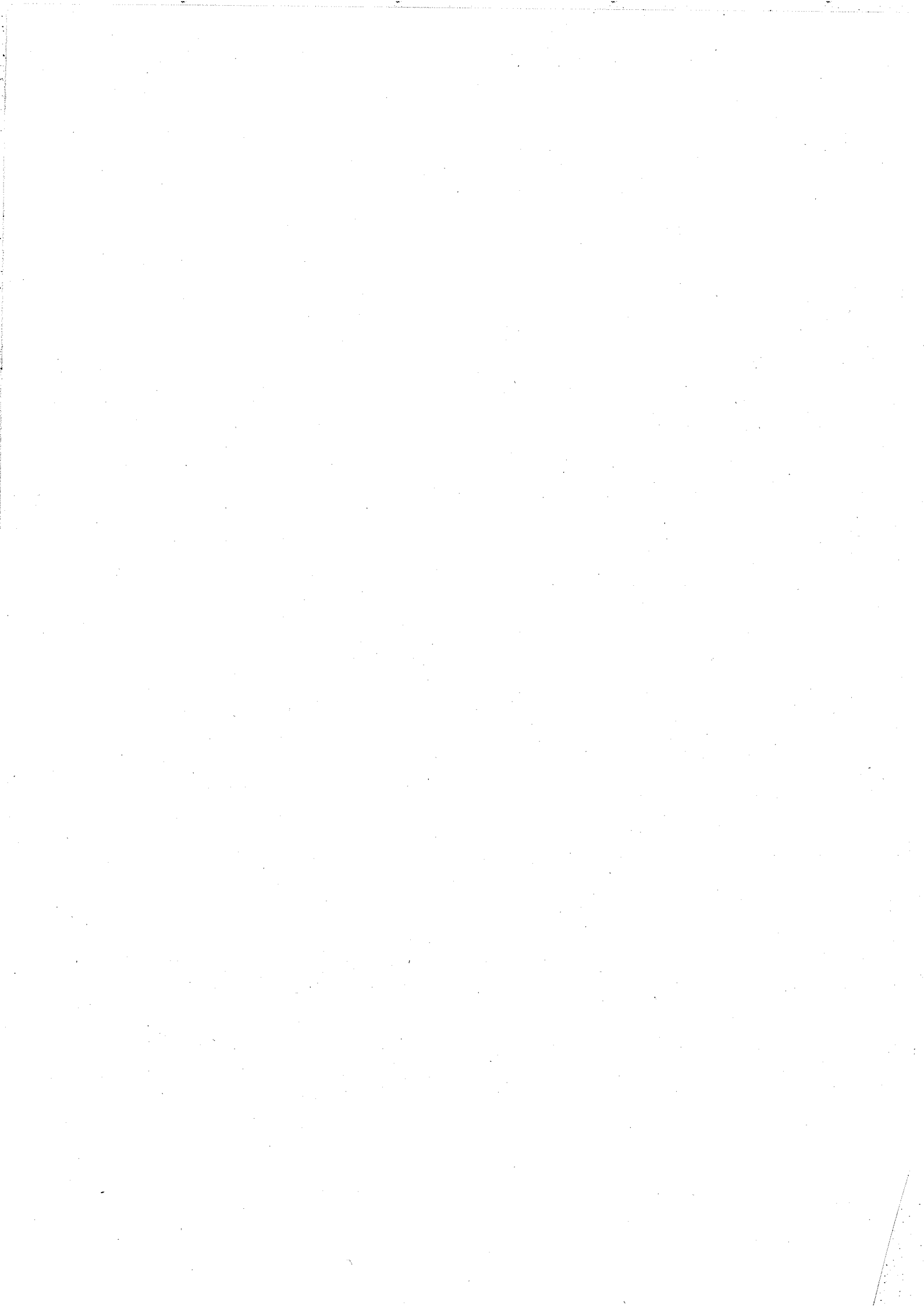
依據：行政程序法第一百五十一條第二項準用第一百五十四條第一項。

公告事項：

- 一、修正機關：行政院農業委員會。
- 二、修正依據：植物防疫檢疫法第十四條第一項及第十六條第二項。
- 三、「中華民國輸入植物或植物產品檢疫規定」部分規定如附件，本案另載於本會全球資訊網（網址：<http://www.coa.gov.tw>）及動植物防疫檢疫局全球資訊網（網址：<http://www.baphiq.gov.tw>）。
- 四、對於本公告內容有任何意見或修正建議者，請於本公告刊登公報之次日起7日內陳述意見或洽詢：
  - (一)承辦單位：行政院農業委員會動植物防疫檢疫局
  - (二)地址：10075臺北市重慶南路2段51號9樓
  - (三)電話：02-23431401
  - (四)傳真：02-23570679
  - (五)電子郵件信箱：[baphiq@mail.baphiq.gov.tw](mailto:baphiq@mail.baphiq.gov.tw)

副本：

主任委員 陳保基



## 中華民國輸入植物或植物產品檢疫規定部分規定修正草案對照表

修正規定			現行規定			說明							
<p>甲、禁止輸入之植物或植物產品 依據：植物防疫檢疫法第十四條第一項規定。 一、禁止輸入之植物或植物產品之名稱及其部位、國家或地區、禁止原因如下表：</p>			<p>甲、禁止輸入之植物或植物產品 依據：植物防疫檢疫法第十四條第一項規定。 一、禁止輸入之植物或植物產品之名稱及其部位、國家或地區、禁止原因如下表：</p>			<p>配合「中國大陸產櫻桃鮮果實輸入檢疫條件」之訂定，爰於國家或地區欄(3)中國大陸後增列山東省除外之規定。</p>							
<table border="1" style="width: 100%; border-collapse: collapse;"> <thead> <tr> <th style="width: 33%;">植物名稱及其部位</th> <th style="width: 33%;">國家或地區</th> <th style="width: 34%;">禁止原因(病蟲害名稱)</th> </tr> </thead> <tbody> <tr> <td>37. 下列植物之鮮果實： (1) 黃秋葵 (<i>Abelmoschus esculentus = Hibiscus esculentus</i>) (2) 榲桲柑 (<i>Aegle marmelos</i>) (3) 腰果 (<i>Anacardium occidentale</i>) (4) 番荔枝屬 (<i>Annona spp.</i>) (5) 檳榔 (<i>Areca catechu</i>) (6) 小菠蘿蜜 (<i>Artocarpus integer</i>) (7) 楊桃 (<i>Averrhoa carambola</i>) (8) 木奶果 (<i>Baccaurea racemosa</i>) (9) 波漆 (<i>Bouea macrophylla</i>) (10) 波漆屬之一種 (<i>Bouea oppositifolia</i>) (11) 香水樹 (<i>Cananga odorata</i>) (12) 白花菜屬 (<i>Capparis spp.</i>) (13) 玉蕊科之一屬 (<i>Careya spp.</i>) (14) 木瓜 (<i>Carica papaya</i>) (15) 卡梨撒屬之一種 (<i>Carissa carandas</i>) (16) 白柿 (<i>Casimiroa edulis</i>) (17) 金葉樹屬 (<i>Chrysophyllum spp.</i>) (18) 柑桔屬</td> <td>亞洲及太平洋地區 (1) 緬甸 (2) 印度 (3) 中國大陸 (山東省除外) (4) 尼泊爾 (5) 巴基斯坦 (6) 菲律賓 (7) 斯里蘭卡 (8) 泰國 (9) 越南</td> <td>番石榴果實蠅 (<i>Bactrocera correcta</i> (Bezzi))</td> </tr> </tbody> </table>	植物名稱及其部位	國家或地區	禁止原因(病蟲害名稱)	37. 下列植物之鮮果實： (1) 黃秋葵 ( <i>Abelmoschus esculentus = Hibiscus esculentus</i> ) (2) 榲桲柑 ( <i>Aegle marmelos</i> ) (3) 腰果 ( <i>Anacardium occidentale</i> ) (4) 番荔枝屬 ( <i>Annona spp.</i> ) (5) 檳榔 ( <i>Areca catechu</i> ) (6) 小菠蘿蜜 ( <i>Artocarpus integer</i> ) (7) 楊桃 ( <i>Averrhoa carambola</i> ) (8) 木奶果 ( <i>Baccaurea racemosa</i> ) (9) 波漆 ( <i>Bouea macrophylla</i> ) (10) 波漆屬之一種 ( <i>Bouea oppositifolia</i> ) (11) 香水樹 ( <i>Cananga odorata</i> ) (12) 白花菜屬 ( <i>Capparis spp.</i> ) (13) 玉蕊科之一屬 ( <i>Careya spp.</i> ) (14) 木瓜 ( <i>Carica papaya</i> ) (15) 卡梨撒屬之一種 ( <i>Carissa carandas</i> ) (16) 白柿 ( <i>Casimiroa edulis</i> ) (17) 金葉樹屬 ( <i>Chrysophyllum spp.</i> ) (18) 柑桔屬	亞洲及太平洋地區 (1) 緬甸 (2) 印度 (3) 中國大陸 (山東省除外) (4) 尼泊爾 (5) 巴基斯坦 (6) 菲律賓 (7) 斯里蘭卡 (8) 泰國 (9) 越南		番石榴果實蠅 ( <i>Bactrocera correcta</i> (Bezzi))	<table border="1" style="width: 100%; border-collapse: collapse;"> <thead> <tr> <th style="width: 33%;">植物名稱及其部位</th> <th style="width: 33%;">國家或地區</th> <th style="width: 34%;">禁止原因(病蟲害名稱)</th> </tr> </thead> <tbody> <tr> <td>37. 下列植物之鮮果實： (1) 黃秋葵 (<i>Abelmoschus esculentus = Hibiscus esculentus</i>) (2) 榲桲柑 (<i>Aegle marmelos</i>) (3) 腰果 (<i>Anacardium occidentale</i>) (4) 番荔枝屬 (<i>Annona spp.</i>) (5) 檳榔 (<i>Areca catechu</i>) (6) 小菠蘿蜜 (<i>Artocarpus integer</i>) (7) 楊桃 (<i>Averrhoa carambola</i>) (8) 木奶果 (<i>Baccaurea racemosa</i>) (9) 波漆 (<i>Bouea macrophylla</i>) (10) 波漆屬之一種 (<i>Bouea oppositifolia</i>) (11) 香水樹 (<i>Cananga odorata</i>) (12) 白花菜屬 (<i>Capparis spp.</i>) (13) 玉蕊科之一屬 (<i>Careya spp.</i>) (14) 木瓜 (<i>Carica papaya</i>) (15) 卡梨撒屬之一種 (<i>Carissa carandas</i>) (16) 白柿 (<i>Casimiroa edulis</i>) (17) 金葉樹屬 (<i>Chrysophyllum spp.</i>) (18) 柑桔屬</td> <td>亞洲及太平洋地區 (1) 緬甸 (2) 印度 (3) 中國大陸 (4) 尼泊爾 (5) 巴基斯坦 (6) 菲律賓 (7) 斯里蘭卡 (8) 泰國 (9) 越南</td> <td>番石榴果實蠅 (<i>Bactrocera correcta</i> (Bezzi))</td> </tr> </tbody> </table>	植物名稱及其部位	國家或地區	禁止原因(病蟲害名稱)	37. 下列植物之鮮果實： (1) 黃秋葵 ( <i>Abelmoschus esculentus = Hibiscus esculentus</i> ) (2) 榲桲柑 ( <i>Aegle marmelos</i> ) (3) 腰果 ( <i>Anacardium occidentale</i> ) (4) 番荔枝屬 ( <i>Annona spp.</i> ) (5) 檳榔 ( <i>Areca catechu</i> ) (6) 小菠蘿蜜 ( <i>Artocarpus integer</i> ) (7) 楊桃 ( <i>Averrhoa carambola</i> ) (8) 木奶果 ( <i>Baccaurea racemosa</i> ) (9) 波漆 ( <i>Bouea macrophylla</i> ) (10) 波漆屬之一種 ( <i>Bouea oppositifolia</i> ) (11) 香水樹 ( <i>Cananga odorata</i> ) (12) 白花菜屬 ( <i>Capparis spp.</i> ) (13) 玉蕊科之一屬 ( <i>Careya spp.</i> ) (14) 木瓜 ( <i>Carica papaya</i> ) (15) 卡梨撒屬之一種 ( <i>Carissa carandas</i> ) (16) 白柿 ( <i>Casimiroa edulis</i> ) (17) 金葉樹屬 ( <i>Chrysophyllum spp.</i> ) (18) 柑桔屬	亞洲及太平洋地區 (1) 緬甸 (2) 印度 (3) 中國大陸 (4) 尼泊爾 (5) 巴基斯坦 (6) 菲律賓 (7) 斯里蘭卡 (8) 泰國 (9) 越南
植物名稱及其部位	國家或地區	禁止原因(病蟲害名稱)											
37. 下列植物之鮮果實： (1) 黃秋葵 ( <i>Abelmoschus esculentus = Hibiscus esculentus</i> ) (2) 榲桲柑 ( <i>Aegle marmelos</i> ) (3) 腰果 ( <i>Anacardium occidentale</i> ) (4) 番荔枝屬 ( <i>Annona spp.</i> ) (5) 檳榔 ( <i>Areca catechu</i> ) (6) 小菠蘿蜜 ( <i>Artocarpus integer</i> ) (7) 楊桃 ( <i>Averrhoa carambola</i> ) (8) 木奶果 ( <i>Baccaurea racemosa</i> ) (9) 波漆 ( <i>Bouea macrophylla</i> ) (10) 波漆屬之一種 ( <i>Bouea oppositifolia</i> ) (11) 香水樹 ( <i>Cananga odorata</i> ) (12) 白花菜屬 ( <i>Capparis spp.</i> ) (13) 玉蕊科之一屬 ( <i>Careya spp.</i> ) (14) 木瓜 ( <i>Carica papaya</i> ) (15) 卡梨撒屬之一種 ( <i>Carissa carandas</i> ) (16) 白柿 ( <i>Casimiroa edulis</i> ) (17) 金葉樹屬 ( <i>Chrysophyllum spp.</i> ) (18) 柑桔屬	亞洲及太平洋地區 (1) 緬甸 (2) 印度 (3) 中國大陸 (山東省除外) (4) 尼泊爾 (5) 巴基斯坦 (6) 菲律賓 (7) 斯里蘭卡 (8) 泰國 (9) 越南	番石榴果實蠅 ( <i>Bactrocera correcta</i> (Bezzi))											
植物名稱及其部位	國家或地區	禁止原因(病蟲害名稱)											
37. 下列植物之鮮果實： (1) 黃秋葵 ( <i>Abelmoschus esculentus = Hibiscus esculentus</i> ) (2) 榲桲柑 ( <i>Aegle marmelos</i> ) (3) 腰果 ( <i>Anacardium occidentale</i> ) (4) 番荔枝屬 ( <i>Annona spp.</i> ) (5) 檳榔 ( <i>Areca catechu</i> ) (6) 小菠蘿蜜 ( <i>Artocarpus integer</i> ) (7) 楊桃 ( <i>Averrhoa carambola</i> ) (8) 木奶果 ( <i>Baccaurea racemosa</i> ) (9) 波漆 ( <i>Bouea macrophylla</i> ) (10) 波漆屬之一種 ( <i>Bouea oppositifolia</i> ) (11) 香水樹 ( <i>Cananga odorata</i> ) (12) 白花菜屬 ( <i>Capparis spp.</i> ) (13) 玉蕊科之一屬 ( <i>Careya spp.</i> ) (14) 木瓜 ( <i>Carica papaya</i> ) (15) 卡梨撒屬之一種 ( <i>Carissa carandas</i> ) (16) 白柿 ( <i>Casimiroa edulis</i> ) (17) 金葉樹屬 ( <i>Chrysophyllum spp.</i> ) (18) 柑桔屬	亞洲及太平洋地區 (1) 緬甸 (2) 印度 (3) 中國大陸 (4) 尼泊爾 (5) 巴基斯坦 (6) 菲律賓 (7) 斯里蘭卡 (8) 泰國 (9) 越南	番石榴果實蠅 ( <i>Bactrocera correcta</i> (Bezzi))											

<p>(<i>Citrus</i> spp.)  (19) 紅瓜  (<i>Coccinia grandis</i>)  (20) 咖啡屬  (<i>Coffea</i> spp.)  (21) 甜瓜  (<i>Cucumis melo</i>)  (22) 榲桲  (<i>Cydonia oblonga</i>)  (23) 龍眼  (<i>Dimocarpus longan</i>  =<i>Euphoria logana</i>)  (24) 柿屬  (<i>Diospyros</i> spp.)  (25) 羯布羅香屬之一種  (<i>Dipterocarpus obtusifolius</i>)  (26) 杜英屬之一種  (<i>Elaeocarpus madopetalus</i>)  (27) 無花果  (<i>Ficus carica</i>)  (28) 刺籬木  (<i>Flacourtia indica</i>)  (29) 印度李  (<i>Flacourtia jangomas</i>)  (30) 金柑屬  (<i>Fortunella</i> spp.)  (31) 蛋樹  (<i>Garcinia xanthochymus</i>)  (32) 三角柱屬  (<i>Hylocereus</i> spp.)  (33) 苦木科之一種  (<i>Irvingia malayana</i>)  (34) 酒椰子屬之一種  (<i>Jubaea spectabilis</i>)  (35) 紅光樹屬之一種  (<i>Knema angustifolia</i>)  (36) 鱗花木  (<i>Lepisanthes fruticosa</i>)  (37) 番茄  (<i>Lycopersicon esculentum</i>)  (38) 長葉馬府油樹  (<i>Madhuca longifolia</i>)  (39) 白花菜科之一種</p>				<p>(<i>Citrus</i> spp.)  (19) 紅瓜  (<i>Coccinia grandis</i>)  (20) 咖啡屬  (<i>Coffea</i> spp.)  (21) 甜瓜  (<i>Cucumis melo</i>)  (22) 榲桲  (<i>Cydonia oblonga</i>)  (23) 龍眼  (<i>Dimocarpus longan</i>  =<i>Euphoria logana</i>)  (24) 柿屬  (<i>Diospyros</i> spp.)  (25) 羯布羅香屬之一種  (<i>Dipterocarpus obtusifolius</i>)  (26) 杜英屬之一種  (<i>Elaeocarpus madopetalus</i>)  (27) 無花果  (<i>Ficus carica</i>)  (28) 刺籬木  (<i>Flacourtia indica</i>)  (29) 印度李  (<i>Flacourtia jangomas</i>)  (30) 金柑屬  (<i>Fortunella</i> spp.)  (31) 蛋樹  (<i>Garcinia xanthochymus</i>)  (32) 三角柱屬  (<i>Hylocereus</i> spp.)  (33) 苦木科之一種  (<i>Irvingia malayana</i>)  (34) 酒椰子屬之一種  (<i>Jubaea spectabilis</i>)  (35) 紅光樹屬之一種  (<i>Knema angustifolia</i>)  (36) 鱗花木  (<i>Lepisanthes fruticosa</i>)  (37) 番茄  (<i>Lycopersicon esculentum</i>)  (38) 長葉馬府油樹  (<i>Madhuca longifolia</i>)  (39) 白花菜科之一種</p>			
--	--	--	--	--	--	--	--

<p>(<i>Maerua siamensis</i>)  (40) 西印度櫻桃  (<i>Malpighia emarginata</i>  =<i>M. glabra</i>)  (41) 小蘋果  (<i>Malus sylvestris</i>)  (42) 椽果  (<i>Mangifera indica</i>)  (43) 人心果  (<i>Manilkara zapota</i>  =<i>Achras sapota</i>)  (44) 牛油果  (<i>Mimusops elengi</i>)  (45) 文定果  (<i>Muntingia calabura</i>)  (46) 芭蕉屬之一種  (<i>Musa paradisiaca</i>)  (47) 鐵青樹屬之一種  (<i>Olax scandens</i>)  (48) 霸王樹仙人掌  (<i>Opuntia vulgaris</i>)  (49) 棗椰子  (<i>Phoenix dactylifera</i>)  (50) 西印度醋栗  (<i>Phyllanthus acidus</i>)  (51) 印度塔樹  (<i>Polyalthia longifolia</i>)  (52) 枸橼屬  (<i>Poncirus spp.</i>)  (53) 杏  (<i>Prunus armeniaca</i>)  (54) 櫻桃  (<i>Prunus avium</i>)  (55) 酸櫻桃  (<i>Prunus cerasus</i>)  (56) 桃  (<i>Prunus persica</i>)  (57) 番石榴  (<i>Psidium guajava</i>)  (58) 石榴  (<i>Punica granatum</i>)  (59) 西洋梨  (<i>Pyrus communis</i>)  (60) 蓖麻  (<i>Ricinus communis</i>)  (61) 山陀兒  (<i>Sandoricum koetjape</i>)  (62) 檀香</p>				<p>(<i>Maerua siamensis</i>)  (40) 西印度櫻桃  (<i>Malpighia emarginata</i>  =<i>M. glabra</i>)  (41) 小蘋果  (<i>Malus sylvestris</i>)  (42) 椽果  (<i>Mangifera indica</i>)  (43) 人心果  (<i>Manilkara zapota</i>  =<i>Achras sapota</i>)  (44) 牛油果  (<i>Mimusops elengi</i>)  (45) 文定果  (<i>Muntingia calabura</i>)  (46) 芭蕉屬之一種  (<i>Musa paradisiaca</i>)  (47) 鐵青樹屬之一種  (<i>Olax scandens</i>)  (48) 霸王樹仙人掌  (<i>Opuntia vulgaris</i>)  (49) 棗椰子  (<i>Phoenix dactylifera</i>)  (50) 西印度醋栗  (<i>Phyllanthus acidus</i>)  (51) 印度塔樹  (<i>Polyalthia longifolia</i>)  (52) 枸橼屬  (<i>Poncirus spp.</i>)  (53) 杏  (<i>Prunus armeniaca</i>)  (54) 櫻桃  (<i>Prunus avium</i>)  (55) 酸櫻桃  (<i>Prunus cerasus</i>)  (56) 桃  (<i>Prunus persica</i>)  (57) 番石榴  (<i>Psidium guajava</i>)  (58) 石榴  (<i>Punica granatum</i>)  (59) 西洋梨  (<i>Pyrus communis</i>)  (60) 蓖麻  (<i>Ricinus communis</i>)  (61) 山陀兒  (<i>Sandoricum koetjape</i>)  (62) 檀香</p>			
--	--	--	--	--	--	--	--

( <i>Santalum album</i> ) (63) 青皮木屬之一種 ( <i>Schoepfia fragrans</i> ) (64) 白飯樹 ( <i>Securinega virosa</i> ) (65) 酸棗屬 ( <i>Spondias</i> spp.) (66) 飲料馬錢子 ( <i>Strychnos potatorum</i> ) (67) 蒲桃屬 ( <i>Syzygium</i> spp.= <i>Eugenia</i> spp.) (68) 欖仁 ( <i>Terminalia catappa</i> ) (69) 棟科之一種 ( <i>Walsura intermedia</i> ) (70) 棗屬 ( <i>Ziziphus</i> spp.)			( <i>Santalum album</i> ) (63) 青皮木屬之一種 ( <i>Schoepfia fragrans</i> ) (64) 白飯樹 ( <i>Securinega virosa</i> ) (65) 酸棗屬 ( <i>Spondias</i> spp.) (66) 飲料馬錢子 ( <i>Strychnos potatorum</i> ) (67) 蒲桃屬 ( <i>Syzygium</i> spp.= <i>Eugenia</i> spp.) (68) 欖仁 ( <i>Terminalia catappa</i> ) (69) 棟科之一種 ( <i>Walsura intermedia</i> ) (70) 棗屬 ( <i>Ziziphus</i> spp.)			
---	--	--	---	--	--	--

乙、有條件輸入植物或植物產品之檢疫條件

依據：植物防疫檢疫法第十六條第二項規定。

二、「禁止輸入之植物或植物產品」經行政院農業委員會動植物防疫檢疫局認證同意輸入之國家、地區及其輸入植物或植物產品之檢疫條件如下表：

植物名稱及其部位	國家或地區	病蟲害名稱	檢疫條件
14. 下列植物之鮮果實： (1) 櫻桃( <i>Prunus avium</i> )	亞洲及太平洋地區 中國大陸(山東省)	番石榴果實蠅 ( <i>Bactrocera correcta</i> ( <i>Bezzi</i> ))	依「中國大陸產櫻桃鮮果實輸入檢疫條件(如附件)。

十、輸入之植物或植物產品經檢疫結果證明有下列有害生物存在，應經適當之檢疫處理，確定該有害生物完全滅除後，始得輸入。無適當之檢疫處理方式可滅除該有害生物時，應予退運或銷燬。行政院農業委員會動植物防疫檢疫局得對下列有害生物之上一分類群(Taxa)有害生物採取檢疫處理措施。

昆蟲類(309種)  
*Acalolepta cervina*  
*Acanthoscelides obtectus*  
*Acanthoscelides pallidipennis*  
*Acleris gloverana*  
*Acleris variana*  
*Acrogonia terminalis*

十、輸入之植物或植物產品經檢疫結果證明有下列有害生物存在，應經適當之檢疫處理，確定該有害生物完全滅除後，始得輸入。無適當之檢疫處理方式可滅除該有害生物時，應予退運或銷燬。行政院農業委員會動植物防疫檢疫局得對下列有害生物之上一分類群(Taxa)有害生物採取檢疫處理措施。

昆蟲類(305種)  
*Acalolepta cervina*  
*Acanthoscelides obtectus*  
*Acanthoscelides pallidipennis*  
*Acleris gloverana*  
*Acleris variana*  
*Acrogonia terminalis*

一、本項新增。

二、依據我國與中國大陸雙邊諮商結果，及動植物防疫檢疫局植物防疫檢疫諮議委員會檢疫小組第三十次會議決議，自中國大陸山東省產櫻桃鮮果實得依「中國大陸產櫻桃鮮果實輸入檢疫條件」輸入。

依據有害生物危害文獻及風險評估，於昆蟲類增列四種、病毒類增列一種、蟎類增列一種有害生物名單。另查細菌類、線蟲類及寄生性植物類清單中各一種之學名誤植，爰予修正。

<i>Acrolepiopsis assectella</i>	<i>Acrolepiopsis assectella</i>	
<i>Acropolitis rudisana</i>	<i>Acropolitis rudisana</i>	
<i>Adelges tsugae</i>	<i>Adelges tsugae</i>	
<i>Adoxophyes orana</i>	<i>Adoxophyes orana</i>	
<i>Aeolesthes sarta</i>	<i>Aeolesthes sarta</i>	
<i>Aethina tumida</i>	<i>Aethina tumida</i>	
<i>Affirmaspis socotrana</i>	<i>Affirmaspis socotrana</i>	
<i>Agrilus mali</i>	<i>Agrilus mali</i>	
<i>Amorbia emigratella</i>	<i>Amorbia emigratella</i>	
<i>Anastrepha grandis</i>	<i>Anastrepha grandis</i>	
<i>Anastrepha striata</i>	<i>Anastrepha striata</i>	
<i>Anastrepha suspensa</i>	<i>Anastrepha suspensa</i>	
<i>Anchastus swezeyi</i>	<i>Anchastus swezeyi</i>	
<i>Anomala sulcatula</i>	<i>Anomala sulcatula</i>	
<i>Anthonomus bisignifer</i>	<i>Anthonomus bisignifer</i>	
<i>Anthonomus eugenii</i>	<i>Anthonomus eugenii</i>	
<i>Anthonomus grandis</i>	<i>Anthonomus grandis</i>	
<i>Aonidiella lauretorum</i>	<i>Aonidiella lauretorum</i>	
<i>Aonidiella tinerfinensis</i>	<i>Aonidiella tinerfinensis</i>	
<i>Apis mellifera capensis</i>	<i>Apis mellifera capensis</i>	
<i>Apis mellifera scutellata</i>	<i>Apis mellifera scutellata</i>	
<i>Archips micaceanus</i>	<i>Archips micaceanus</i>	
<i>Argyrotaenia ljugiana</i>	<i>Argyrotaenia ljugiana</i>	
<i>Artitropa comus</i>	<i>Artitropa comus</i>	
<i>Aspidiotus spinosus</i>	<i>Aspidiotus spinosus</i>	
<i>Asterolecanium spp.</i>	<i>Asterolecanium spp.</i>	
<i>Bactrocera albistrigata</i>	<i>Bactrocera albistrigata</i>	
<i>Bactrocera aquilonis</i>	<i>Bactrocera aquilonis</i>	
<i>Bactrocera cucumis</i>	<i>Bactrocera cucumis</i>	
<i>Bactrocera decipiens</i>	<i>Bactrocera decipiens</i>	
<i>Bactrocera diversa</i>	<i>Bactrocera diversa</i>	
<i>Bactrocera fascialis</i>	<i>Bactrocera fascialis</i>	
<i>Bactrocera frauenfeldi</i>	<i>Bactrocera frauenfeldi</i>	
<i>Bactrocera jarvisi</i>	<i>Bactrocera jarvisi</i>	
<i>Bactrocera kirki</i>	<i>Bactrocera kirki</i>	
<i>Bactrocera latifons</i>	<i>Bactrocera latifons</i>	
<i>Bactrocera melanota</i>	<i>Bactrocera melanota</i>	
<i>Bactrocera musae</i>	<i>Bactrocera musae</i>	
<i>Bactrocera neohumeralis</i>	<i>Bactrocera neohumeralis</i>	
<i>Bactrocera occipitalis</i>	<i>Bactrocera occipitalis</i>	
<i>Bactrocera oleae</i>	<i>Bactrocera oleae</i>	
<i>Bactrocera passiflorae</i>	<i>Bactrocera passiflorae</i>	
<i>Bactrocera psidii</i>	<i>Bactrocera psidii</i>	
<i>Bactrocera trivialis</i>	<i>Bactrocera trivialis</i>	

<p><i>Bactrocera tuberculata</i>  <i>Bactrocera umbrosa</i>  <i>Bactrocera xanthodes</i>  <i>Bemisia cordylinidis</i>  <i>Blitopertha orientalis</i>  <i>Brachycerus spp.</i>  <i>Brachydactyla discoidea</i>  <i>Bruchophagus roddi</i>  <i>Bruchus pisorum</i>  <i>Bruchus rufimanus</i>  <i>Bulbifer homeorhynchus</i>  <i>Cacoecimorpha pronubana</i>  <u><i>Cacopsylla chinensis</i></u>  <i>Cacyreus marshalli</i>  <i>Callipogon relictus</i>  <i>Callosobruchus analis</i>  <i>Callosobruchus phaseoli</i>  <i>Camponotus floridanus</i>  <i>Camponotus pennsylvanicus</i>  <i>Capua tortrix</i>  <i>Cataenococcus hispidus</i>  <i>Catamacta lotinana</i>  <i>Ceratitis spp.</i>  <i>Chaetanaphothrips signipennis</i>  <i>Choristoneura conflictana</i>  <i>Choristoneura fumiferana</i>  <i>Choristoneura occidentalis</i>  <i>Choristoneura rosaceana</i>  <i>Chrysomphalus diversicolor</i>  <i>Chrysomphalus pinnulifera</i>  <i>Cilaeopeplus swezeyi</i>  <i>Coccus spp.</i>  <i>Conoderus eveillardi</i>  <i>Conoderus rufangulus</i>  <i>Conopia hector</i>  <i>Conotrachelus aguacatae</i>  <i>Contarinia nasturtii</i>  <i>Contarinia sorghicola</i>  <i>Coptotermes curvignathus</i>  <i>Copturus aguacatae</i>  <i>Cryptophlebia leucotreta</i>  <i>Cryptorhynchus lapathi</i>  <i>Curculio davidi</i>  <i>Curculio elephas</i></p>	<p><i>Bactrocera tuberculata</i>  <i>Bactrocera umbrosa</i>  <i>Bactrocera xanthodes</i>  <i>Bemisia cordylinidis</i>  <i>Blitopertha orientalis</i>  <i>Brachycerus spp.</i>  <i>Brachydactyla discoidea</i>  <i>Bruchophagus roddi</i>  <i>Bruchus pisorum</i>  <i>Bruchus rufimanus</i>  <i>Bulbifer homeorhynchus</i>  <i>Cacoecimorpha pronubana</i>    <i>Cacyreus marshalli</i>  <i>Callipogon relictus</i>  <i>Callosobruchus analis</i>  <i>Callosobruchus phaseoli</i>  <i>Camponotus floridanus</i>  <i>Camponotus pennsylvanicus</i>  <i>Capua tortrix</i>  <i>Cataenococcus hispidus</i>  <i>Catamacta lotinana</i>  <i>Ceratitis spp.</i>  <i>Chaetanaphothrips signipennis</i>  <i>Choristoneura conflictana</i>  <i>Choristoneura fumiferana</i>  <i>Choristoneura occidentalis</i>  <i>Choristoneura rosaceana</i>  <i>Chrysomphalus diversicolor</i>  <i>Chrysomphalus pinnulifera</i>  <i>Cilaeopeplus swezeyi</i>  <i>Coccus spp.</i>  <i>Conoderus eveillardi</i>  <i>Conoderus rufangulus</i>  <i>Conopia hector</i>  <i>Conotrachelus aguacatae</i>  <i>Contarinia nasturtii</i>  <i>Contarinia sorghicola</i>  <i>Coptotermes curvignathus</i>  <i>Copturus aguacatae</i>  <i>Cryptophlebia leucotreta</i>  <i>Cryptorhynchus lapathi</i>  <i>Curculio davidi</i>  <i>Curculio elephas</i></p>	
--	--	--



<i>Curculio nucum</i>	<i>Curculio nucum</i>	
<i>Cydia latiferreana</i>	<i>Cydia latiferreana</i>	
<i>Cydia splendana</i>	<i>Cydia splendana</i>	
<i>Dacus bivittatus</i>	<i>Dacus bivittatus</i>	
<i>Dacus vertebratus</i>	<i>Dacus vertebratus</i>	
<i>Dasineura mali</i>	<i>Dasineura mali</i>	
<i>Dendroctonus adjunctus</i>	<i>Dendroctonus adjunctus</i>	
<i>Dendroctonus ponderosae</i>	<i>Dendroctonus ponderosae</i>	
<i>Dendroctonus rufipennis</i>	<i>Dendroctonus rufipennis</i>	
<i>Dendrolimus sibiricus</i>	<i>Dendrolimus sibiricus</i>	
<i>Delia antique</i>	<i>Delia antique</i>	
<i>Delia platura</i>	<i>Delia platura</i>	
<i>Diabrotica barberi</i>	<i>Diabrotica barberi</i>	
<i>Diabrotica speciosa</i>	<i>Diabrotica speciosa</i>	
<i>Diabrotica undecimpunctata</i>	<i>Diabrotica undecimpunctata</i>	
<i>Diabrotica virgifera virgifera</i>	<i>Diabrotica virgifera virgifera</i>	
<i>Diaprepes abbreviatus</i>	<i>Diaprepes abbreviatus</i>	
<i>Diaspidiotus gigas</i>	<i>Diaspidiotus gigas</i>	
<i>Diaspidiotus ostreaeformis</i>	<i>Diaspidiotus ostreaeformis</i>	
<i>Diaspidiotus pyri</i>	<i>Diaspidiotus pyri</i>	
<i>Diatraea saccharalis</i>	<i>Diatraea saccharalis</i>	
<i>Dilobopterus costalimai</i>	<i>Dilobopterus costalimai</i>	
<i>Draeculacephala minerva</i>	<i>Draeculacephala minerva</i>	
<i>Dreyfusia piceae</i>	<i>Dreyfusia piceae</i>	
<i>Drosophila suzukii</i>	<i>Drosophila suzukii</i>	
<i>Dryocoetes confuses</i>	<i>Dryocoetes confuses</i>	
<i>Dryocosmus kuriphilus</i>	<i>Dryocosmus kuriphilus</i>	
<i>Dysmicoccus nesophilus</i>	<i>Dysmicoccus nesophilus</i>	
<i>Dyspessa ulula</i>	<i>Dyspessa ulula</i>	
<i>Earias vittella</i>	<i>Earias vittella</i>	
<i>Echinothrips americanus</i>	<i>Echinothrips americanus</i>	
<i>Elytroteinus subtruncatus</i>	<i>Elytroteinus subtruncatus</i>	
<i>Epiphyas postvittana</i>	<i>Epiphyas postvittana</i>	
<i>Epitrix cucumeris</i>	<i>Epitrix cucumeris</i>	
<i>Epitrix tuberis</i>	<i>Epitrix tuberis</i>	
<i>Eriosoma lanigerum</i>	<i>Eriosoma lanigerum</i>	
<i>Eublemma rufimixta</i>	<i>Eublemma rufimixta</i>	
<i>Eucalymnatus tessellatus</i>	<i>Eucalymnatus tessellatus</i>	
<i>Euproctis chrysorrhoea</i>	<i>Euproctis chrysorrhoea</i>	
<i>Eurytoma laricis</i>	<i>Eurytoma laricis</i>	
<i>Exosoma lusitanica</i>	<i>Exosoma lusitanica</i>	
<i>Frankliniella spp.</i>	<i>Frankliniella spp.</i>	
<i>Furcaspis oceanica</i>	<i>Furcaspis oceanica</i>	
<i>Gnathotrichus sulcatus</i>	<i>Gnathotrichus sulcatus</i>	

<i>Gonipterus gibberus</i>	<i>Gonipterus gibberus</i>	
<i>Graphocephala atropunctata</i>	<i>Graphocephala atropunctata</i>	
<i>Grapholita funebrana</i>	<i>Grapholita funebrana</i>	
<i>Grapholita inopinata</i>	<i>Grapholita inopinata</i>	
<i>Grapholita molesta</i>	<i>Grapholita molesta</i>	
<i>Grapholita packardi</i>	<i>Grapholita packardi</i>	
<i>Grapholita prunivora</i>	<i>Grapholita prunivora</i>	
<i>Heilipus lauri</i>	<i>Heilipus lauri</i>	
<i>Helicoverpa zea</i>	<i>Helicoverpa zea</i>	
<i>Hemiberlesia cyanophylli</i>	<i>Hemiberlesia cyanophylli</i>	
<i>Hemiberlesia palmae</i>	<i>Hemiberlesia palmae</i>	
<i>Hemimene juliana</i>	<i>Hemimene juliana</i>	
<i>Hesperophanes campestris</i>	<i>Hesperophanes campestris</i>	
<i>Heterobostrychus aequalis</i>	<i>Heterobostrychus aequalis</i>	
<i>Heteronychus arator</i>	<i>Heteronychus arator</i>	
<i>Holotrichia mindanaona</i>	<i>Holotrichia mindanaona</i>	
<i>Homalodisca coagulata</i>	<i>Homalodisca coagulata</i>	
<i>Howardia biclavis</i>	<i>Howardia biclavis</i>	
<i>Hylastes ater</i>	<i>Hylastes ater</i>	
<i>Hylurgopinus rufipes</i>	<i>Hylurgopinus rufipes</i>	
<i>Hyphantria cunea</i>	<i>Hyphantria cunea</i>	
<i>Hypothenemus hampei</i>	<i>Hypothenemus hampei</i>	
<i>Insulaspis orsoni</i>	<i>Insulaspis orsoni</i>	
<i>Ips calligraphus</i>	<i>Ips calligraphus</i>	
<i>Ips confusus</i>	<i>Ips confusus</i>	
<i>Ips grandicollis</i>	<i>Ips grandicollis</i>	
<i>Ips lecontei</i>	<i>Ips lecontei</i>	
<i>Ips pini</i>	<i>Ips pini</i>	
<i>Ips plastographus</i>	<i>Ips plastographus</i>	
<i>Ips typographus</i>	<i>Ips typographus</i>	
<i>Ischnaspis longirostris</i>	<i>Ischnaspis longirostris</i>	
<i>Kandyosilis cochleata</i>	<i>Kandyosilis cochleata</i>	
<i>Kytorhinus immixtus</i>	<i>Kytorhinus immixtus</i>	
<i>Laspeyresia spp.</i>	<i>Laspeyresia spp.</i>	
<i>Lepidosaphes salicina</i>	<i>Lepidosaphes salicina</i>	
<i>Lepidosaphes tokionis</i>	<i>Lepidosaphes tokionis</i>	
<i>Leptocybe invasa</i>	<i>Leptocybe invasa</i>	
<i>Leucoptera malifoliella</i>	<i>Leucoptera malifoliella</i>	
<i>Limonijs californicus</i>	<i>Limonijs californicus</i>	
<i>Listroderes subcinctus</i>	<i>Listroderes subcinctus</i>	
<i>Listronotus bonariensis</i>	<i>Listronotus bonariensis</i>	
<i>Lobesia botrana</i>	<i>Lobesia botrana</i>	
<i>Lopholeucaspis cockerelli</i>	<i>Lopholeucaspis cockerelli</i>	
<i>Linepithema humile</i>	<i>Linepithema humile</i>	

<i>Lymantria dispar</i>	<i>Lymantria dispar</i>	
<i>Lymantria monacha</i>	<i>Lymantria monacha</i>	
<i>Malacosoma americanum</i>	<i>Malacosoma americanum</i>	
<i>Malacosoma disstria</i>	<i>Malacosoma disstria</i>	
<i>Margarodes prieskaensis</i>	<i>Margarodes prieskaensis</i>	
<i>Margarodes vredendalensis</i>	<i>Margarodes vredendalensis</i>	
<i>Matsucoccus matsumurae</i>	<i>Matsucoccus matsumurae</i>	
<i>Mayetiola destructor</i>	<i>Mayetiola destructor</i>	
<i>Megalometis chilensis</i>	<i>Megalometis chilensis</i>	
<i>Melanaspis corticosa</i>	<i>Melanaspis corticosa</i>	
<i>Melanaspis elaeagni</i>	<i>Melanaspis elaeagni</i>	
<i>Melanaspis nigropunctata</i>	<i>Melanaspis nigropunctata</i>	
<i>Melanotus communis</i>	<i>Melanotus communis</i>	
<i>Metamasius spp.</i>	<i>Metamasius spp.</i>	
<i>Monochamus spp.</i>	<i>Monochamus spp.</i>	
<i>Mudaria luteileprosa</i>	<i>Mudaria luteileprosa</i>	
<i>Mycetaspis personata</i>	<i>Mycetaspis personata</i>	
<i>Mycetaspis sphaerioides</i>	<i>Mycetaspis sphaerioides</i>	
<i>Myzus ornatus</i>	<i>Myzus ornatus</i>	
<i>Nasutitermes corniger</i>	<i>Nasutitermes corniger</i>	
<i>Naupactus xanthographus</i>	<i>Naupactus xanthographus</i>	
<i>Nemorimyza maculosa</i>	<i>Nemorimyza maculosa</i>	
<i>Neomaskellia bergii</i>	<i>Neomaskellia bergii</i>	
<i>Neoselenaspidus silvaticus</i>	<i>Neoselenaspidus silvaticus</i>	
<i>Nipaecoccus nipae</i>	<i>Nipaecoccus nipae</i>	
<i>Nysius vinitor</i>	<i>Nysius vinitor</i>	
<i>Oncometopia fascialis</i>	<i>Oncometopia fascialis</i>	
<i>Operophtera brumata</i>	<i>Operophtera brumata</i>	
<i>Opogona sacchari</i>	<i>Opogona sacchari</i>	
<i>Opuntiaspis carinata</i>	<i>Opuntiaspis carinata</i>	
<i>Orgyia antiqua</i>	<i>Orgyia antiqua</i>	
<i>Orgyia pseudotsugata</i>	<i>Orgyia pseudotsugata</i>	
<i>Orthezia insignis</i>	<i>Orthezia insignis</i>	
<i>Oryctes monoceros</i>	<i>Oryctes monoceros</i>	
<i>Ostrinia nubilalis</i>	<i>Ostrinia nubilalis</i>	
<i>Otiorhynchus ligustici</i>	<i>Otiorhynchus ligustici</i>	
<i>Oulema melanopus</i>	<i>Oulema melanopus</i>	
<i>Oviticoccus agavium</i>	<i>Oviticoccus agavium</i>	
<i>Pammene fasciana</i>	<i>Pammene fasciana</i>	
<i>Paranthrene tabaniformis</i>	<i>Paranthrene tabaniformis</i>	
<u><i>Parthenolecanium corni</i></u>		
<i>Paraputo hispidus</i>	<i>Paraputo hispidus</i>	
<i>Pectinophora scutigera</i>	<i>Pectinophora scutigera</i>	
<i>Perileucoptera coffeella</i>	<i>Perileucoptera coffeella</i>	

<i>Phalaenoides glycinae</i> <i>Phenacaspis tangana</i> <i>Phenacoccus manihoti</i> <i>Phyllophaga</i> spp. <i>Pinnaspis dracaeanae</i> <i>Pinnaspis strachani</i> <i>Pissodes nemorensis</i> <i>Pissodes strobi</i> <i>Pissodes terminalis</i> <i>Pogonomyrmex occidentalis</i> <i>Prays endocarpa</i> <i>Premnotrypes latithorax</i> <i>Premnotrypes suturicallus</i> <i>Premnotrypes vorax</i> <i>Proeulia</i> spp. <i>Promecothea cumingii</i> <i>Prostephanus truncatus</i> <i>Proterhinus vestitus</i> <i>Pseudischnaspis bowreyi</i> <i>Pseudococcus</i> spp. <i>Pterandrus</i> spp. <i>Ptilodactyla exotica</i> <i>Pulvinaria urbicola</i> <u><i>Pulvinaria vitis</i></u> <i>Rhagoletis cerasi</i> <i>Rhagoletis cingulata</i> <i>Rhagoletis fausta</i> <i>Rhagoletis indifferens</i> <i>Rhagoletis mendax</i> <i>Rhizoecus amorphophalli</i> <i>Rhizoecus floridanus</i> <i>Rhizoecus simplex</i> <i>Rhodogastria carneola</i> <i>Rhynchophorus palmarum</i> <i>Rondotia menciata</i> <i>Sahlbergella singularis</i> <i>Sardia pluto</i> <i>Scirtothrips aurantii</i> <i>Scirtothrips citri</i> <i>Scolytus morawitzi</i> <i>Scolytus multistriatus</i> <i>Scolytus scolytus</i> <i>Scyphophorus acupunctatus</i> <i>Selenaspidus antsingyi</i>	<i>Phalaenoides glycinae</i> <i>Phenacaspis tangana</i> <i>Phenacoccus manihoti</i> <i>Phyllophaga</i> spp. <i>Pinnaspis dracaeanae</i> <i>Pinnaspis strachani</i> <i>Pissodes nemorensis</i> <i>Pissodes strobi</i> <i>Pissodes terminalis</i> <i>Pogonomyrmex occidentalis</i> <i>Prays endocarpa</i> <i>Premnotrypes latithorax</i> <i>Premnotrypes suturicallus</i> <i>Premnotrypes vorax</i> <i>Proeulia</i> spp. <i>Promecothea cumingii</i> <i>Prostephanus truncatus</i> <i>Proterhinus vestitus</i> <i>Pseudischnaspis bowreyi</i> <i>Pseudococcus</i> spp. <i>Pterandrus</i> spp. <i>Ptilodactyla exotica</i> <i>Pulvinaria urbicola</i>  <i>Rhagoletis cerasi</i> <i>Rhagoletis cingulata</i> <i>Rhagoletis fausta</i> <i>Rhagoletis indifferens</i> <i>Rhagoletis mendax</i> <i>Rhizoecus amorphophalli</i> <i>Rhizoecus floridanus</i> <i>Rhizoecus simplex</i> <i>Rhodogastria carneola</i> <i>Rhynchophorus palmarum</i> <i>Rondotia menciata</i> <i>Sahlbergella singularis</i> <i>Sardia pluto</i> <i>Scirtothrips aurantii</i> <i>Scirtothrips citri</i> <i>Scolytus morawitzi</i> <i>Scolytus multistriatus</i> <i>Scolytus scolytus</i> <i>Scyphophorus acupunctatus</i> <i>Selenaspidus antsingyi</i>	
---	---	--

<p> <i>Selenaspidus littoralis</i>  <i>Sesamia cretica</i>  <i>Sirex noctilio</i>  <i>Sitophilus granarius</i>  <i>Sminthurus viridis</i>  <i>Solenopsis invicta</i>  <i>Solenopsis richteri</i>  <i>Solenopsis richteri</i> × <i>Solenopsis</i>  <i>Solenopsis xyloni</i>  <i>Sphaeraspis vitis</i>  <i>Spilonota lechriaspis</i>  <u><i>Spilonota pryusicola</i></u>  <i>Spodoptera eridania</i>  <i>Spodoptera frugiperda</i>  <i>Spodoptera littoralis</i>  <i>Stenoma catenifer</i>  <i>Taeniothrips samdensis</i>  <i>Tecia solanivora</i>  <i>Tessaratoma papillosa</i>  <i>Tetropium castaneum</i>  <i>Tetropium fuscum</i>  <i>Tetropium gracilicorne</i>  <i>Thrips spp.</i>  <i>Tomicus piniperda</i>  <i>Toxotrypana curvicauda</i>  <i>Trioza erytrae</i>  <i>Trogoderma granarium</i>  <i>Unaspis citri</i>  <i>Viteus vitifoliae</i>  <i>Voraspis tangana</i>  <i>Wasmannia auropunctata</i>  <i>Xyleborus affinis</i>  <i>Xyleborus ferrugineus</i>  <i>Xyleborus rugatus</i>  <i>Xylopsocus capucinus</i>  <i>Xylotrechus altaicus</i>  <i>Xyphon (formerly Carnecephala) fulgida</i>  <i>Yponomeuta malinellus</i>  <i>Zabrotes subfasciatus</i> </p> <p>           蟎類 (32 種)  <i>Acarapis woodi</i>  <i>Aculops fuchsiae</i>  <i>Aculus schlechtendali</i> </p>	<p> <i>Selenaspidus littoralis</i>  <i>Sesamia cretica</i>  <i>Sirex noctilio</i>  <i>Sitophilus granarius</i>  <i>Sminthurus viridis</i>  <i>Solenopsis invicta</i>  <i>Solenopsis richteri</i>  <i>Solenopsis richteri</i> × <i>Solenopsis</i>  <i>Solenopsis xyloni</i>  <i>Sphaeraspis vitis</i>  <i>Spilonota lechriaspis</i> </p> <p> <i>Spodoptera eridania</i>  <i>Spodoptera frugiperda</i>  <i>Spodoptera littoralis</i>  <i>Stenoma catenifer</i>  <i>Taeniothrips samdensis</i>  <i>Tecia solanivora</i>  <i>Tessaratoma papillosa</i>  <i>Tetropium castaneum</i>  <i>Tetropium fuscum</i>  <i>Tetropium gracilicorne</i>  <i>Thrips spp.</i>  <i>Tomicus piniperda</i>  <i>Toxotrypana curvicauda</i>  <i>Trioza erytrae</i>  <i>Trogoderma granarium</i>  <i>Unaspis citri</i>  <i>Viteus vitifoliae</i>  <i>Voraspis tangana</i>  <i>Wasmannia auropunctata</i>  <i>Xyleborus affinis</i>  <i>Xyleborus ferrugineus</i>  <i>Xyleborus rugatus</i>  <i>Xylopsocus capucinus</i>  <i>Xylotrechus altaicus</i>  <i>Xyphon (formerly Carnecephala) fulgida</i>  <i>Yponomeuta malinellus</i>  <i>Zabrotes subfasciatus</i> </p> <p>           蟎類 (31 種)  <i>Acarapis woodi</i>  <i>Aculops fuchsiae</i>  <i>Aculus schlechtendali</i> </p>	
--	--	--

<p><i>Brevipalpus chilensis</i>  <i>Bryobia eharai</i>  <i>Bryobia rubrioculus</i>  <i>Cochlodispus operosus</i>  <i>Eotetranychus carpini</i>  <i>Eotetranychus pruni</i>  <i>Epitrimerus pyri</i>  <i>Eriophyes gossypii</i>  <i>Mononychellus tanajoa</i>  <i>Oligonychus gossypii</i>  <i>Oligonychus grypus</i>  <i>Oligonychus indicus</i>  <i>Oligonychus peruvianus</i>  <i>Oligonychus punicae</i>  <i>Oligonychus sacchari</i>  <i>Oligonychus yotrheri</i>  <i>Panonychus ulmi</i>  <i>Petrobia latens</i>  <i>Phytoseius hongkongensis</i>  <u><i>Phyllocoptes aphrastus</i></u>  <i>Schizotetranychus andreopogoni</i>  <i>Schizotetranychus asparagi</i>  <i>Tetranychus canadensis</i>  <i>Tetranychus marianae</i>  <i>Tetranychus mcdanieli</i>  <i>Tetranychus mexicanus</i>  <i>Tetranychus turkestanii</i>  <i>Tropilaelaps clareae</i>  <i>Varroa sinhai</i></p> <p>病毒類 (465 種)  <i>Abutilon mosaic virus (AbMV) (Geminiviridae, Begomovirus)</i>  <i>Ageratum yellow vein virus (AYVV) (Geminiviridae, Begomovirus)</i>  <i>African cassava mosaic virus (ACMV) (Geminiviridae, Begomovirus)</i>  <i>Agropyron mosaic virus (AgMV) (Potyviridae, Bymovirus)</i>  <i>Alfalfa cryptic virus 1 (ACV-1) (Partitiviridae, alphacryptovirus)</i>  <i>Alfalfa enation virus</i>  <i>Alfalfa mosaic virus (AIMV) (Bromoviridae, alfamovirus)</i>  <i>Alsike clover vein mosaic virus</i>  <i>Alstroemeria mosaic virus (AIMV) (Potyviridae, potyvirus)</i>  <i>Amaranthus leaf mottle virus (AmLMV) (Potyviridae, potyvirus)</i>  <i>American plum line pattern virus (APLPV) (Bromoviridae, Ilarvirus)</i>  <i>Andean potato latent virus (APLV) (Tymovirus)</i>  <i>Andean potato mottle virus (APMoV) (Comoviridae, Comovirus)</i>  <i>Anthoxanthum latent blanching virus (ALBV) (Hordeivirus)</i></p>	<p><i>Brevipalpus chilensis</i>  <i>Bryobia eharai</i>  <i>Bryobia rubrioculus</i>  <i>Cochlodispus operosus</i>  <i>Eotetranychus carpini</i>  <i>Eotetranychus pruni</i>  <i>Epitrimerus pyri</i>  <i>Eriophyes gossypii</i>  <i>Mononychellus tanajoa</i>  <i>Oligonychus gossypii</i>  <i>Oligonychus grypus</i>  <i>Oligonychus indicus</i>  <i>Oligonychus peruvianus</i>  <i>Oligonychus punicae</i>  <i>Oligonychus sacchari</i>  <i>Oligonychus yotrheri</i>  <i>Panonychus ulmi</i>  <i>Petrobia latens</i>  <i>Phytoseius hongkongensis</i></p> <p><i>Schizotetranychus andreopogoni</i>  <i>Schizotetranychus asparagi</i>  <i>Tetranychus canadensis</i>  <i>Tetranychus marianae</i>  <i>Tetranychus mcdanieli</i>  <i>Tetranychus mexicanus</i>  <i>Tetranychus turkestanii</i>  <i>Tropilaelaps clareae</i>  <i>Varroa sinhai</i></p> <p>病毒類 (464 種)  <i>Abutilon mosaic virus (AbMV) (Geminiviridae, Begomovirus)</i>  <i>Ageratum yellow vein virus (AYVV) (Geminiviridae, Begomovirus)</i>  <i>African cassava mosaic virus (ACMV) (Geminiviridae, Begomovirus)</i>  <i>Agropyron mosaic virus (AgMV) (Potyviridae, Bymovirus)</i>  <i>Alfalfa cryptic virus 1 (ACV-1) (Partitiviridae, alphacryptovirus)</i>  <i>Alfalfa enation virus</i>  <i>Alfalfa mosaic virus (AIMV) (Bromoviridae, alfamovirus)</i>  <i>Alsike clover vein mosaic virus</i>  <i>Alstroemeria mosaic virus (AIMV) (Potyviridae, potyvirus)</i>  <i>Amaranthus leaf mottle virus (AmLMV) (Potyviridae, potyvirus)</i>  <i>American plum line pattern virus (APLPV) (Bromoviridae, Ilarvirus)</i>  <i>Andean potato latent virus (APLV) (Tymovirus)</i>  <i>Andean potato mottle virus (APMoV) (Comoviridae, Comovirus)</i>  <i>Anthoxanthum latent blanching virus (ALBV) (Hordeivirus)</i></p>	
--	--	--

<p><i>Anthriscus yellows virus (AYV) (Sequiviridae, waikavirus)</i>  <i>Apple chat fruit disease</i>  <i>Apple chlorotic leaf spot virus (ACLSV) (Trichovirus, Flexiviridae)</i>  <i>Apple dimple fruit viroid (ADFVd) (Apscaviroid, Pospiviroidae)</i>  <i>Apple mosaic virus (ApMV) (Bromoviridae, Ilarvirus)</i>  <i>Apple scar skin viroid (ASSVd) (Pospiviroidae, Apscaviriod)</i>  <i>Apple stem grooving virus (ASGV) (Capillovirus, Flexiviridae)</i>  <i>Apple stem pitting virus (ASPV) (Foveavirus, Flexiviridae)</i>  <i>Arabis mosaic virus (ArMV) (Comoviridae, Nepovirus)</i>  <i>Araujia mosaic virus (ArjMV) (Potyviridae, potyvirus)</i>  <i>Arracacha Virus A (AVA) (Comoviridae, Nepovirus)</i>  <i>Arracacha Virus B (AVB) (Comoviridae, Nepovirus)</i>  <i>Arracacha Virus Y (AVY) (Potyviridae, potyvirus)</i>  <i>Artichoke Italian latent virus (AILV) (Comoviridae, nepovirus)</i>  <i>Artichoke latent virus (ArLV) (Potyviridae, potyvirus)</i>  <i>Artichoke mottled crinkle virus (AMCV) (Tombusviridae, Tombusvirus)</i>  <i>Artichoke yellow ringspot virus (AYRSV) (Comoviridae, Nepovirus)</i>  <i>Asparagus virus 1 (AV-1) (Potyviridae, potyvirus)</i>  <i>Asparagus virus 2 (AV-2) (Bromoviridae, ilarvirus)</i>  <i>Asparagus virus 3 (AV-3) (Potexvirus)</i>  <i>Banana bunchy top virus (BBTV) (Nanovirus)</i>  <i>Barley mild mosaic virus (BaMMV) (Potyviridae, bymovirus)</i>  <i>Barley mosaic virus (BBV)</i>  <i>Barley yellow dwarf virus-GPV (BYDV-GPV) (Luteovirus)</i>  <i>Barley yellow mosaic virus (BaYMV) (Potyviridae, Bymovirus)</i>  <i>Barley yellow striate mosaic virus (BYSMV) (Rhabdoviridae, Cytorhabdovirus)</i>  <i>Bean calico mosaic virus (BCaMV) (Geminiviridae, Begomovirus)</i>  <i>Bean common mosaic virus (Potyviridae, potyvirus)</i>  <i>Bean golden mosaic virus (BGMV) (Geminiviridae, Begomovirus)</i>  <i>Bean leaf roll virus (BLRV) (Luteoviridae, luteovirus)</i>  <i>Bean mild mosaic virus (BMMV) (Tombusviridae, carmovirus)</i>  <i>Bean pod mottle virus (BPMV) (Comoviridae, comovirus)</i>  <i>Bean rugose mosaic virus (BRMV) (Comoviridae, comovirus)</i>  <i>Bean southern mosaic virus (SBMV) (sobemovirus)</i>  <i>Bean yellow vein banding virus (BYVBV) (Umbravirus)</i>  <i>Beet distortion mosaic virus</i>  <i>Beet mild yellowing virus (BMYV) (Luteoviridae, luteovirus)</i>  <i>Beet mosaic virus (BtMV) (Potyviridae, potyvirus)</i>  <i>Beet soil-borne virus (BSBV) (Pomovirus)</i>  <i>Beet western yellows virus (BWYV) (Luteoviridae, luteovirus)</i>  <i>Beet yellows virus (BYV) (Closteroviridae, closterovirus)</i>  <i>Beet yellow stunt virus (BYSV) (Closteroviridae, closterovirus)</i>  <i>Beet curly top virus (BCTV) (Geminiviridae, Curtomovirus)</i>  <i>Beet leaf curl virus (BLCV) (Rhabdoviridae)</i></p>	<p><i>Anthriscus yellows virus (AYV) (Sequiviridae, waikavirus)</i>  <i>Apple chat fruit disease</i>  <i>Apple chlorotic leaf spot virus (ACLSV) (Trichovirus, Flexiviridae)</i>  <i>Apple dimple fruit viroid (ADFVd) (Apscaviroid, Pospiviroidae)</i>  <i>Apple mosaic virus (ApMV) (Bromoviridae, Ilarvirus)</i>  <i>Apple scar skin viroid (ASSVd) (Pospiviroidae, Apscaviriod)</i>  <i>Apple stem grooving virus (ASGV) (Capillovirus, Flexiviridae)</i>  <i>Apple stem pitting virus (ASPV) (Foveavirus, Flexiviridae)</i>  <i>Arabis mosaic virus (ArMV) (Comoviridae, Nepovirus)</i>  <i>Araujia mosaic virus (ArjMV) (Potyviridae, potyvirus)</i>  <i>Arracacha Virus A (AVA) (Comoviridae, Nepovirus)</i>  <i>Arracacha Virus B (AVB) (Comoviridae, Nepovirus)</i>  <i>Arracacha Virus Y (AVY) (Potyviridae, potyvirus)</i>  <i>Artichoke Italian latent virus (AILV) (Comoviridae, nepovirus)</i>  <i>Artichoke latent virus (ArLV) (Potyviridae, potyvirus)</i>  <i>Artichoke mottled crinkle virus (AMCV) (Tombusviridae, Tombusvirus)</i>  <i>Artichoke yellow ringspot virus (AYRSV) (Comoviridae, Nepovirus)</i>  <i>Asparagus virus 1 (AV-1) (Potyviridae, potyvirus)</i>  <i>Asparagus virus 2 (AV-2) (Bromoviridae, ilarvirus)</i>  <i>Asparagus virus 3 (AV-3) (Potexvirus)</i>  <i>Banana bunchy top virus (BBTV) (Nanovirus)</i>  <i>Barley mild mosaic virus (BaMMV) (Potyviridae, bymovirus)</i>  <i>Barley mosaic virus (BBV)</i>  <i>Barley yellow dwarf virus-GPV (BYDV-GPV) (Luteovirus)</i>  <i>Barley yellow mosaic virus (BaYMV) (Potyviridae, Bymovirus)</i>  <i>Barley yellow striate mosaic virus (BYSMV) (Rhabdoviridae, Cytorhabdovirus)</i>  <i>Bean calico mosaic virus (BCaMV) (Geminiviridae, Begomovirus)</i>  <i>Bean common mosaic virus (Potyviridae, potyvirus)</i>  <i>Bean golden mosaic virus (BGMV) (Geminiviridae, Begomovirus)</i>  <i>Bean leaf roll virus (BLRV) (Luteoviridae, luteovirus)</i>  <i>Bean mild mosaic virus (BMMV) (Tombusviridae, carmovirus)</i>  <i>Bean pod mottle virus (BPMV) (Comoviridae, comovirus)</i>  <i>Bean rugose mosaic virus (BRMV) (Comoviridae, comovirus)</i>  <i>Bean southern mosaic virus (SBMV) (sobemovirus)</i>  <i>Bean yellow vein banding virus (BYVBV) (Umbravirus)</i>  <i>Beet distortion mosaic virus</i>  <i>Beet mild yellowing virus (BMYV) (Luteoviridae, luteovirus)</i>  <i>Beet mosaic virus (BtMV) (Potyviridae, potyvirus)</i>  <i>Beet soil-borne virus (BSBV) (Pomovirus)</i>  <i>Beet western yellows virus (BWYV) (Luteoviridae, luteovirus)</i>  <i>Beet yellows virus (BYV) (Closteroviridae, closterovirus)</i>  <i>Beet yellow stunt virus (BYSV) (Closteroviridae, closterovirus)</i>  <i>Beet curly top virus (BCTV) (Geminiviridae, Curtomovirus)</i>  <i>Beet leaf curl virus (BLCV) (Rhabdoviridae)</i></p>	
--	--	--

<p><i>Beet necrotic yellow vein virus (BNYVV) (Benyvirus)</i>  <i>Belladonna mottle virus (BeMV) (Tymovirus)</i>  <i>Bermuda grass etched-line virus (BELV) (Marafivirus)</i>  <i>Bhendi yellow vein mosaic virus (BYVMV) (Geminiviridae, Begomovirus)</i>  <i>Bidens mosaic virus (BiMV) (Potyviridae, potyvirus)</i>  <i>Bidens mottle virus (BiMoV)(Potyviridae, potyvirus)</i>  <i>Black raspberry latent ilarvirus</i>  <i>Black raspberry necrosis virus (BRNV)</i>  <i>Blackcurrant reversion associated virus (BRAV) (Comoviridae, Nepovirus)</i>  <i>Blueberry leaf mottle virus (BLMoV) (Comoviridae, Nepovirus)</i>  <i>Blueberry necrotic shock virus (BlShV) (ilarvirus)</i>  <i>Blueberry red ringspot virus (BRRV) (Caulimoviridae, caulimovirus)</i>  <i>Blueberry scorch virus (BBScV) (carlavirus)</i>  <i>Blueberry shoestring virus (BSSV) (sobemovirus)</i>  <i>Broad bean B virus</i>  <i>Broad bean necrosis virus (BBNV) (Pomovirus)</i>  <i>Broad bean severe chlorosis virus (Closteroviridae, closterovirus)</i>  <i>Broad bean stain virus(BBSV) (Comoviridae, comovirus)</i>  <i>Broad bean true mosaic virus (BBTMV) (Comoviridae, comovirus)</i>  <i>Broad bean wilt virusd (BBWV) (Comoviridae, fabavirus)</i>  <i>Broad bean yellow ringspot virus</i>  <i>Broad bean yellow vein virus (Rhabdoviridae, cytorhabdovirus)</i>  <i>Broccoli necrotic yellows virus (BNYV) (Rhabdoviridae, cytorhabdovirus)</i>  <i>Brome mosaic virus (BMV) (Bromoviridae, bromovirus)</i>  <i>Brome streak mosaic virus (BrStMV) (Potyviridae, Tritimovirus)</i>  <i>Burdock mosaic virus</i>  <i>Burdock mottle virus</i>  <i>Burdock yellows virus (BuYV) (Closteroviridae, closterovirus)</i>  <i>Cacao necrosis virus (CNV) (Comoviridae, nepovirus)</i>  <i>Cacao swollen shoot virus (CSSV) (Caulimoviridae, badnavirus)</i>  <i>Cacao yellow mosaic virus (CYMV) (Tymovirus)</i>  <i>Cactus virus (CV-2) (Carlavirus)</i>  <i>Canna yellow mottle VIRUS (CaYMV) (Caulimoviridae, badnavirus)</i>  <i>Caper latent virus (CapLV) (Carlavirus)</i>  <i>Cardamine chlorotic fleck virus (CCFV) (Tombusviridae, carmovirus)</i>  <i>Cardamom mosaic virus (CdMV) (Potyviridae, potyvirus)</i>  <i>Carnation cryptic virus I(CCV-1) (Partitiviridae, alphacryptovirus)</i>  <i>Carnation etched ring virus (CERV) (Cualimoviridae, caulimovirus)</i>  <i>Carnation Italian ringspot virus (CIRV) (Tombusviridae, tombusvirus)</i>  <i>Carnation latent virus (CLV) (Carlavirus)</i>  <i>Carnation mottle virus (CarMV) (Carmovirus)</i>  <i>Carnation necrotic fleck virus (CNFV) (Clostreoviridae, closterovirus)</i>  <i>Carnation ringspot virus (CRSV) (Tombusviridae, dianthovirus)</i>  <i>Carnation vein mottle virus (CVMoV) (Potyviridae, potyvirus)</i></p>	<p><i>Beet necrotic yellow vein virus (BNYVV) (Benyvirus)</i>  <i>Belladonna mottle virus (BeMV) (Tymovirus)</i>  <i>Bermuda grass etched-line virus (BELV) (Marafivirus)</i>  <i>Bhendi yellow vein mosaic virus (BYVMV) (Geminiviridae, Begomovirus)</i>  <i>Bidens mosaic virus (BiMV) (Potyviridae, potyvirus)</i>  <i>Bidens mottle virus (BiMoV)(Potyviridae, potyvirus)</i>  <i>Black raspberry latent ilarvirus</i>  <i>Black raspberry necrosis virus (BRNV)</i>  <i>Blackcurrant reversion associated virus (BRAV) (Comoviridae, Nepovirus)</i>  <i>Blueberry leaf mottle virus (BLMoV) (Comoviridae, Nepovirus)</i>  <i>Blueberry necrotic shock virus (BlShV) (ilarvirus)</i>  <i>Blueberry red ringspot virus (BRRV) (Caulimoviridae, caulimovirus)</i>  <i>Blueberry scorch virus (BBScV) (carlavirus)</i>  <i>Blueberry shoestring virus (BSSV) (sobemovirus)</i>  <i>Broad bean B virus</i>  <i>Broad bean necrosis virus (BBNV) (Pomovirus)</i>  <i>Broad bean severe chlorosis virus (Closteroviridae, closterovirus)</i>  <i>Broad bean stain virus(BBSV) (Comoviridae, comovirus)</i>  <i>Broad bean true mosaic virus (BBTMV) (Comoviridae, comovirus)</i>  <i>Broad bean wilt virusd (BBWV) (Comoviridae, fabavirus)</i>  <i>Broad bean yellow ringspot virus</i>  <i>Broad bean yellow vein virus (Rhabdoviridae, cytorhabdovirus)</i>  <i>Broccoli necrotic yellows virus (BNYV) (Rhabdoviridae, cytorhabdovirus)</i>  <i>Brome mosaic virus (BMV) (Bromoviridae, bromovirus)</i>  <i>Brome streak mosaic virus (BrStMV) (Potyviridae, Tritimovirus)</i>  <i>Burdock mosaic virus</i>  <i>Burdock mottle virus</i>  <i>Burdock yellows virus (BuYV) (Closteroviridae, closterovirus)</i>  <i>Cacao necrosis virus (CNV) (Comoviridae, nepovirus)</i>  <i>Cacao swollen shoot virus (CSSV) (Caulimoviridae, badnavirus)</i>  <i>Cacao yellow mosaic virus (CYMV) (Tymovirus)</i>  <i>Cactus virus (CV-2) (Carlavirus)</i>  <i>Canna yellow mottle VIRUS (CaYMV) (Caulimoviridae, badnavirus)</i>  <i>Caper latent virus (CapLV) (Carlavirus)</i>  <i>Cardamine chlorotic fleck virus (CCFV) (Tombusviridae, carmovirus)</i>  <i>Cardamom mosaic virus (CdMV) (Potyviridae, potyvirus)</i>  <i>Carnation cryptic virus I(CCV-1) (Partitiviridae, alphacryptovirus)</i>  <i>Carnation etched ring virus (CERV) (Cualimoviridae, caulimovirus)</i>  <i>Carnation Italian ringspot virus (CIRV) (Tombusviridae, tombusvirus)</i>  <i>Carnation latent virus (CLV) (Carlavirus)</i>  <i>Carnation mottle virus (CarMV) (Carmovirus)</i>  <i>Carnation necrotic fleck virus (CNFV) (Clostreoviridae, closterovirus)</i>  <i>Carnation ringspot virus (CRSV) (Tombusviridae, dianthovirus)</i>  <i>Carnation vein mottle virus (CVMoV) (Potyviridae, potyvirus)</i></p>	
---	---	--



<p>Carrot latent virus (CtLV) (Rhabdoviridae, nucleorhabdovirus)</p> <p>Carrot mottle mimic virus (CmoMV) (Umbravirus)</p> <p>Carrot mottle virus (CMoV) (Umbravirus)</p> <p>Carrot red leaf virus (CtRLV) (Luteoviridae, luteovirus)</p> <p>Carrot temperate virus 1 (CteV-1) (Partitiviridae, alphacryptovirus)</p> <p>Carrot temperate virus 2 (CteV-2) (Partitiviridae, betacryptovirus)</p> <p>Carrot temperate virus 3 (CteV-3) (Partitiviridae, alphacryptovirus)</p> <p>Carrot temperate virus 4 (CteV-4) (Partitiviridae, alphacryptovirus)</p> <p>Carrot thin leaf virus (CTLV) (Potyviridae, potyvirus)</p> <p>Cowpea chlorotic mottle virus (CCMV) (Bromoviridae, Bromovirus)</p> <p>Cowpea golden mosaic virus (CPGMV) (Geminiviridae, Begomovirus)</p> <p>Cowpea green vein-banding virus (CGVBV) (Potyviridae, Potyvirus)</p> <p>Cowpea mosaic virus (CPMV) (Comoviridae, Comovirus)</p> <p>Cowpea rugose mosaic virus (CPRMV) (Potyviridae, Potyvirus)</p> <p>Cowpea severe mosaic virus (CPSMV) (Comoviridae, Comovirus)</p> <p>Cowpea stunt virus (Luteovirus)</p> <p>Cassava African mosaic virus (ACMV) (Geminiviridae, bigeminivirus)</p> <p>Cassava green mottle virus (CaGMV) (Comoviridae, nepovirus)</p> <p>Cassava Indian mosaic virus (ICMV) (Geminiviridae, bigeminivirus)</p> <p>Cassava Ivorian bacilliform virus (CsIBV) (Ourmiavirus)</p> <p>Cassava virus X (CsVX) (Potexvirus)</p> <p>Cassia mosaic virus</p> <p>Cassia ringspot virus</p> <p>Cassia yellow blotch virus (CYBV) (Bromoviridae, bromovirus)</p> <p>Cassia yellow spot virus (CasYSV) (Potyviridae, potyvirus)</p> <p>Cauliflower mosaic virus (CaMV) (Caulimoviridae, caulimovirus)</p> <p>Celery mosaic virus (CeMV) (Potyviridae, potyvirus)</p> <p>Cereal northern mosaic virus (NCMV) (cytorhabdovirus)</p> <p>Cassava brown streak virus (CsBSV) (Potyviridae, Ipomovirus)</p> <p>Cassava common mosaic virus (CsCMV) (Potexvirus)</p> <p>Cereal chlorotic mosaic virus (CCMoV) (Rhabdoviridae)</p> <p>Cherry green ring mottle virus (CGRMV) (Foveavirus)</p> <p>Cherry leaf roll virus (CLRV) (Comoviridae, Nepovirus)</p> <p>Cherry mottle leaf virus (CMLV) (Trichovirus)</p> <p>Cherry rasp leaf virus (CRLV) (Comoviridae, Nepovirus)</p> <p>Cherry virus A (CVA) (Capillovirus)</p> <p>Chickpea bushy dwarf virus (CpBDV) (Potyviridae, potyvirus)</p> <p>Chickpea distortion mosaic virus (Potyviridae, potyvirus)</p> <p>Chicory virus (ChVX) (potexvirus)</p> <p>Chicory yellow mottle virus (ChYMV) (Comoviridae, nepovirus)</p> <p>Chino del tomate virus (CdTV) (Geminiviridae, bigeminivirus)</p> <p>Chloris striate mosaic virus (CSMV) (Geminiviridae, monogeminivirus)</p> <p>Chrysanthemum virus B (CVB) (Carlavirus)</p> <p>Citrus blight disease</p>	<p>Carrot latent virus (CtLV) (Rhabdoviridae, nucleorhabdovirus)</p> <p>Carrot mottle mimic virus (CmoMV) (Umbravirus)</p> <p>Carrot mottle virus (CMoV) (Umbravirus)</p> <p>Carrot red leaf virus (CtRLV) (Luteoviridae, luteovirus)</p> <p>Carrot temperate virus 1 (CteV-1) (Partitiviridae, alphacryptovirus)</p> <p>Carrot temperate virus 2 (CteV-2) (Partitiviridae, betacryptovirus)</p> <p>Carrot temperate virus 3 (CteV-3) (Partitiviridae, alphacryptovirus)</p> <p>Carrot temperate virus 4 (CteV-4) (Partitiviridae, alphacryptovirus)</p> <p>Carrot thin leaf virus (CTLV) (Potyviridae, potyvirus)</p> <p>Cowpea chlorotic mottle virus (CCMV) (Bromoviridae, Bromovirus)</p> <p>Cowpea golden mosaic virus (CPGMV) (Geminiviridae, Begomovirus)</p> <p>Cowpea green vein-banding virus (CGVBV) (Potyviridae, Potyvirus)</p> <p>Cowpea mosaic virus (CPMV) (Comoviridae, Comovirus)</p> <p>Cowpea rugose mosaic virus (CPRMV) (Potyviridae, Potyvirus)</p> <p>Cowpea severe mosaic virus (CPSMV) (Comoviridae, Comovirus)</p> <p>Cowpea stunt virus (Luteovirus)</p> <p>Cassava African mosaic virus (ACMV) (Geminiviridae, bigeminivirus)</p> <p>Cassava green mottle virus (CaGMV) (Comoviridae, nepovirus)</p> <p>Cassava Indian mosaic virus (ICMV) (Geminiviridae, bigeminivirus)</p> <p>Cassava Ivorian bacilliform virus (CsIBV) (Ourmiavirus)</p> <p>Cassava virus X (CsVX) (Potexvirus)</p> <p>Cassia mosaic virus</p> <p>Cassia ringspot virus</p> <p>Cassia yellow blotch virus (CYBV) (Bromoviridae, bromovirus)</p> <p>Cassia yellow spot virus (CasYSV) (Potyviridae, potyvirus)</p> <p>Cauliflower mosaic virus (CaMV) (Caulimoviridae, caulimovirus)</p> <p>Celery mosaic virus (CeMV) (Potyviridae, potyvirus)</p> <p>Cereal northern mosaic virus (NCMV) (cytorhabdovirus)</p> <p>Cassava brown streak virus (CsBSV) (Potyviridae, Ipomovirus)</p> <p>Cassava common mosaic virus (CsCMV) (Potexvirus)</p> <p>Cereal chlorotic mosaic virus (CCMoV) (Rhabdoviridae)</p> <p>Cherry green ring mottle virus (CGRMV) (Foveavirus)</p> <p>Cherry leaf roll virus (CLRV) (Comoviridae, Nepovirus)</p> <p>Cherry mottle leaf virus (CMLV) (Trichovirus)</p> <p>Cherry rasp leaf virus (CRLV) (Comoviridae, Nepovirus)</p> <p>Cherry virus A (CVA) (Capillovirus)</p> <p>Chickpea bushy dwarf virus (CpBDV) (Potyviridae, potyvirus)</p> <p>Chickpea distortion mosaic virus (Potyviridae, potyvirus)</p> <p>Chicory virus (ChVX) (potexvirus)</p> <p>Chicory yellow mottle virus (ChYMV) (Comoviridae, nepovirus)</p> <p>Chino del tomate virus (CdTV) (Geminiviridae, bigeminivirus)</p> <p>Chloris striate mosaic virus (CSMV) (Geminiviridae, monogeminivirus)</p> <p>Chrysanthemum virus B (CVB) (Carlavirus)</p> <p>Citrus blight disease</p>	
--	--	--

<p><i>Citrus leprosis virus (CiLV) (Rhabdoviridae)</i>  <i>Citrus yellow mosaic virus (CiYMV) (Caulimoviridae, Badnavirus)</i>  <i>Citrus leaf rugose virus (CiLRV) (Rhabdoviridae, ilarvirus)</i>  <i>Citrus ringspot virus</i>  <i>Citrus sudden death-associated virus (CSD- associated virus) (Marafivirus, Tymoviridae)</i>  <i>Citrus variegation virus (CVV) (Bromoviridae, ilarvirus)</i>  <i>Clitoria yellow vein virus (CYVV) (Tymovirus)</i>  <i>Clover mild mosaic virus</i>  <i>Clover wound tumor virus (WTV) (Phytoreovirus)</i>  <i>Clover yellow mosaic virus (CIYMV) (potexvirus)</i>  <i>Clover yellows virus (CYV) (Closteroviridae, closterovirus)</i>  <i>Clover yellow vein virus (CIYVV) (Potyviridae, potyvirus)</i>  <i>Cocksfoot mottle virus (CoMV) (Sobemovirus)</i>  <i>Coconut foliar decay virus (CFDV) (Nanavirus)</i>  <i>Commelina diffusa virus (Potyviridae, potyvirus)</i>  <i>Commelina mosaic virus (ComMV) (Potyviridae, potyvirus)</i>  <i>Commelina virus X (ComVX) (potexvirus)</i>  <i>Commelina yellow mottle virus (ComYMV) (Caulimoviridae, badnavirus)</i>  <i>Cocksfoot mild mosaic virus (CoMV) (Sobemovirus)</i>  <i>Cocoa mottle leaf virus</i>  <i>Cocoa necrosis virus (CoNV) (Comoviridae, Nepovirus)</i>  <i>Cocoa swollen shoot virus (CSSV) (Caulimoviridae, Badnavirus)</i>  <i>Cocoa yellow mosaic virus</i>  <i>Colombian datura virus (CDV) (Potyviridae, Potyvirus)</i>  <i>Coriander feathery red vein virus (CFRVV) (Rhabdoviridae, nucleorhabdovirus)</i>  <i>Cotton leaf curl virus (CLCuV) (Geminiviridae, Begomovirus)</i>  <i>Cotton leaf crumple virus (CLCrV) (Geminiviridae, bigeminivirus )</i>  <i>Cowpea mild mottle virus (CPMMV) (Carlavirus)</i>  <i>Crimson clover latent virus (CCLV) (Comoviridae, nepovirus)</i>  <i>Crinum mosaic virus (CriMV) (Potyviridae, potyvirus)</i>  <i>Croton yellow vein mosaic virus (CYVMV) (Geminiviridae, bigeminivirus )</i>  <i>Cucumber green mottle mosaic virus (CGMMV) (Tobamovirus)</i>  <i>Cucumber leaf spot virus (CLSV) (Tombusviridae, carmovirus)</i>  <i>Cucumber necrosis virus (CuNV) (Tombusviridae, tombusvirus)</i>  <i>Cucumber soil-borne virus (CuSBV) (Tombusviridae, carmovirus)</i>  <i>Cucumber vein yellowing virus (CVYV)</i>  <i>Cucurbit chlorotic yellows virus (CCYC) (Closteroviridae, Crinivirus)</i>  <i>Cycas necrotic stunt virus (CNSV) (Comoviridae, nepovirus)</i>  <i>Cymbidium ringspot virus (CymRSV) (Tombusviridae, tombusvirus)</i>  <i>Cynodon chlorotic streak virus</i>  <i>Cynosurus mottle virus (CnMoV) (Sobemovirus)</i>  <i>Dahlia mosaic virus (DMV) (Caulimoviridae, caulimovirus )</i>  <i>Dandelion latent virus (DaLV) (Carlavirus)</i></p>	<p><i>Citrus leprosis virus (CiLV) (Rhabdoviridae)</i>  <i>Citrus yellow mosaic virus (CiYMV) (Caulimoviridae, Badnavirus)</i>  <i>Citrus leaf rugose virus (CiLRV) (Rhabdoviridae, ilarvirus)</i>  <i>Citrus ringspot virus</i>  <i>Citrus sudden death-associated virus (CSD- associated virus) (Marafivirus, Tymoviridae)</i>  <i>Citrus variegation virus (CVV) (Bromoviridae, ilarvirus)</i>  <i>Clitoria yellow vein virus (CYVV) (Tymovirus)</i>  <i>Clover mild mosaic virus</i>  <i>Clover wound tumor virus (WTV) (Phytoreovirus)</i>  <i>Clover yellow mosaic virus (CIYMV) (potexvirus)</i>  <i>Clover yellows virus (CYV) (Closteroviridae, closterovirus)</i>  <i>Clover yellow vein virus (CIYVV) (Potyviridae, potyvirus)</i>  <i>Cocksfoot mottle virus (CoMV) (Sobemovirus)</i>  <i>Coconut foliar decay virus (CFDV) (Nanavirus)</i>  <i>Commelina diffusa virus (Potyviridae, potyvirus)</i>  <i>Commelina mosaic virus (ComMV) (Potyviridae, potyvirus)</i>  <i>Commelina virus X (ComVX) (potexvirus)</i>  <i>Commelina yellow mottle virus (ComYMV) (Caulimoviridae, badnavirus)</i>  <i>Cocksfoot mild mosaic virus (CoMV) (Sobemovirus)</i>  <i>Cocoa mottle leaf virus</i>  <i>Cocoa necrosis virus (CoNV) (Comoviridae, Nepovirus)</i>  <i>Cocoa swollen shoot virus (CSSV) (Caulimoviridae, Badnavirus)</i>  <i>Cocoa yellow mosaic virus</i>  <i>Colombian datura virus (CDV) (Potyviridae, Potyvirus)</i>  <i>Coriander feathery red vein virus (CFRVV) (Rhabdoviridae, nucleorhabdovirus)</i>  <i>Cotton leaf curl virus (CLCuV) (Geminiviridae, Begomovirus)</i>  <i>Cotton leaf crumple virus (CLCrV) (Geminiviridae, bigeminivirus )</i>  <i>Cowpea mild mottle virus (CPMMV) (Carlavirus)</i>  <i>Crimson clover latent virus (CCLV) (Comoviridae, nepovirus)</i>  <i>Crinum mosaic virus (CriMV) (Potyviridae, potyvirus)</i>  <i>Cucumber green mottle mosaic virus (CGMMV) (Tobamovirus)</i>  <i>Cucumber leaf spot virus (CLSV) (Tombusviridae, carmovirus)</i>  <i>Cucumber necrosis virus (CuNV) (Tombusviridae, tombusvirus)</i>  <i>Cucumber soil-borne virus (CuSBV) (Tombusviridae, carmovirus)</i>  <i>Cucumber vein yellowing virus (CVYV)</i>  <i>Cucurbit chlorotic yellows virus (CCYC) (Closteroviridae, Crinivirus)</i>  <i>Cycas necrotic stunt virus (CNSV) (Comoviridae, nepovirus)</i>  <i>Cymbidium ringspot virus (CymRSV) (Tombusviridae, tombusvirus)</i>  <i>Cynodon chlorotic streak virus</i>  <i>Cynosurus mottle virus (CnMoV) (Sobemovirus)</i>  <i>Dahlia mosaic virus (DMV) (Caulimoviridae, caulimovirus )</i>  <i>Dandelion latent virus (DaLV) (Carlavirus)</i></p>	
--	--	--

<p><i>Dandelion yellow mosaic virus (DaYMV) (Sequiviridae, sequivirus)</i>  <i>Daphne virus X (DVX) (Potexvirus)</i>  <i>Daphne virus Y (DVY) (Potyviridae, potyvirus)</i>  <i>Datura Colombian virus (CDV) (Potyviridae, potyvirus)</i>  <i>Datura distortion mosaic virus (DDMV) (Potyviridae, potyvirus)</i>  <i>Datura necrosis virus ( DNV) (Potyviridae, potyvirus)</i>  <i>Datura shoestring virus (DSTV) (Potyviridae, potyvirus)</i>  <i>Datura yellow vein virus (DYVV) (Rhabdoviridae, nucleorhabdovirus)</i>  <i>Datura distortion virus</i>  <i>Datura enation mosaic virus</i>  <i>Dendrobium mosaic virus (DeMV) (Potyviridae, potyvirus)</i>  <i>Desmodium mosaic virus (DesMV) (Potyviridae, potyvirus)</i>  <i>Desmodium yellow mottle virus (DYMV) (Tymovirus)</i>  <i>Digitaria streak virus (DSV) (Geminiviridae, monogeminivirus)</i>  <i>Digitaria striate mosaic (DiSMV) (Geminiviridae, monogeminivirus)</i>  <i>Dioscorea alata virus (Potyviridae, potyvirus)</i>  <i>Dioscorea bacilliform virus (DBV) ((Caulimoviridae, badnavirus)</i>  <i>Dioscorea green banding mosaic virus (Potyviridae, potyvirus)</i>  <i>Dodonaea yellows-associated virus</i>  <i>Dolichos yellow mosaic virus (DoMYV) (Geminiviridae, bigeminivirus)</i>  <i>Dulcamara mottle virus (DuMV) (Tymovirus)</i>  <i>Eggplant green mosaic virus (EGMV) (Potyviridae, potyvirus)</i>  <i>Eggplant mottled dwarf virus (EMDV) (Rhabdoviridae, nucleorhabdovirus)</i>  <i>Elderberry virus (EV)(Carlavirus 1)</i>  <i>Epirus cherry virus (EpCV) (Ourmiavirus)</i>  <i>Erysimum latent virus (ErLV) (Tymovirus)</i>  <i>Dulcamara mottle virus (DuMV) (Tymovirus)</i>  <i>Echinochloa ragged stunt virus (ERSV) (Reoviridae, Oryzavirus)</i>  <i>Elm mottle virus (EMoV) (Bromoviridae, Ilarvirus)</i>  <i>European wheat striate mosaic virus (EWSMV) (Tenuivirus)</i>  <i>Euphorbia mosaic virus (EuMV) (Geminiviridae, bigeminivirus)</i>  <i>Euphorbia ringspot virus (EuRV) (Potyviridae, potyvirus)</i>  <i>Cucumber green mottle mosaic virus (CGMMV) (Tobamovirus)</i>  <i>Cucumber leaf spot virus (CLSV) (Tombusviridae, carmovirus)</i>  <i>Cucumber necrosis virus (CuNV) (Tombusviridae, tombusvirus)</i>  <i>Cucumber soil-borne virus (CuSBV) (Tombusviridae, carmovirus)</i>  <i>Cucumber vein yellowing virus (CVYV)</i>  <i>Cucurbit chlorotic yellows virus (CCYC) (Closteroviridae, Crinivirus)</i>  <i>Cycas necrotic stunt virus (CNSV) (Comoviridae, nepovirus)</i>  <i>Cymbidium ringspot virus (CymRSV) (Tombusviridae, tombusvirus)</i>  <i>Cynodon chlorotic streak virus</i>  <i>Cynosurus mottle virus (CnMoV) (Sobemovirus)</i>  <i>Dahlia mosaic virus (DMV) (Caulimoviridae, caulimovirus )</i>  <i>Dandelion latent virus (DaLV) (Carlavirus)</i></p>	<p><i>Dandelion yellow mosaic virus (DaYMV) (Sequiviridae, sequivirus)</i>  <i>Daphne virus X (DVX) (Potexvirus)</i>  <i>Daphne virus Y (DVY) (Potyviridae, potyvirus)</i>  <i>Datura Colombian virus (CDV) (Potyviridae, potyvirus)</i>  <i>Datura distortion mosaic virus (DDMV) (Potyviridae, potyvirus)</i>  <i>Datura necrosis virus ( DNV) (Potyviridae, potyvirus)</i>  <i>Datura shoestring virus (DSTV) (Potyviridae, potyvirus)</i>  <i>Datura yellow vein virus (DYVV) (Rhabdoviridae, nucleorhabdovirus)</i>  <i>Datura distortion virus</i>  <i>Datura enation mosaic virus</i>  <i>Dendrobium mosaic virus (DeMV) (Potyviridae, potyvirus)</i>  <i>Desmodium mosaic virus (DesMV) (Potyviridae, potyvirus)</i>  <i>Desmodium yellow mottle virus (DYMV) (Tymovirus)</i>  <i>Digitaria streak virus (DSV) (Geminiviridae, monogeminivirus)</i>  <i>Digitaria striate mosaic (DiSMV) (Geminiviridae, monogeminivirus)</i>  <i>Dioscorea alata virus (Potyviridae, potyvirus)</i>  <i>Dioscorea bacilliform virus (DBV) ((Caulimoviridae, badnavirus)</i>  <i>Dioscorea green banding mosaic virus (Potyviridae, potyvirus)</i>  <i>Dodonaea yellows-associated virus</i>  <i>Dolichos yellow mosaic virus (DoMYV) (Geminiviridae, bigeminivirus)</i>  <i>Dulcamara mottle virus (DuMV) (Tymovirus)</i>  <i>Eggplant green mosaic virus (EGMV) (Potyviridae, potyvirus)</i>  <i>Eggplant mottled dwarf virus (EMDV) (Rhabdoviridae, nucleorhabdovirus)</i>  <i>Elderberry virus (EV)(Carlavirus 1)</i>  <i>Epirus cherry virus (EpCV) (Ourmiavirus)</i>  <i>Erysimum latent virus (ErLV) (Tymovirus)</i>  <i>Dulcamara mottle virus (DuMV) (Tymovirus)</i>  <i>Echinochloa ragged stunt virus (ERSV) (Reoviridae, Oryzavirus)</i>  <i>Elm mottle virus (EMoV) (Bromoviridae, Ilarvirus)</i>  <i>European wheat striate mosaic virus (EWSMV) (Tenuivirus)</i>  <i>Euphorbia mosaic virus (EuMV) (Geminiviridae, bigeminivirus)</i>  <i>Euphorbia ringspot virus (EuRV) (Potyviridae, potyvirus)</i>  <i>Cucumber green mottle mosaic virus (CGMMV) (Tobamovirus)</i>  <i>Cucumber leaf spot virus (CLSV) (Tombusviridae, carmovirus)</i>  <i>Cucumber necrosis virus (CuNV) (Tombusviridae, tombusvirus)</i>  <i>Cucumber soil-borne virus (CuSBV) (Tombusviridae, carmovirus)</i>  <i>Cucumber vein yellowing virus (CVYV)</i>  <i>Cucurbit chlorotic yellows virus (CCYC) (Closteroviridae, Crinivirus)</i>  <i>Cycas necrotic stunt virus (CNSV) (Comoviridae, nepovirus)</i>  <i>Cymbidium ringspot virus (CymRSV) (Tombusviridae, tombusvirus)</i>  <i>Cynodon chlorotic streak virus</i>  <i>Cynosurus mottle virus (CnMoV) (Sobemovirus)</i>  <i>Dahlia mosaic virus (DMV) (Caulimoviridae, caulimovirus )</i>  <i>Dandelion latent virus (DaLV) (Carlavirus)</i></p>	
--	--	--

<p><i>Dandelion yellow mosaic virus (DaYMV) (Sequiviridae, sequivirus)</i>  <i>Daphne virus X (DVX) (Potexvirus)</i>  <i>Daphne virus Y (DVY) (Potyviridae, potyvirus)</i>  <i>Datura Colombian virus (CDV) (Potyviridae, potyvirus)</i>  <i>Datura distortion mosaic virus (DDMV) (Potyviridae, potyvirus)</i>  <i>Datura necrosis virus ( DNV) (Potyviridae, potyvirus)</i>  <i>Datura shoestring virus (DSTV) (Potyviridae, potyvirus)</i>  <i>Datura yellow vein virus (DYVV) (Rhabdoviridae, nucleorhabdovirus)</i>  <i>Datura distortion virus</i>  <i>Datura enation mosaic virus</i>  <i>Dendrobium mosaic virus (DeMV) (Potyviridae, potyvirus)</i>  <i>Desmodium mosaic virus (DesMV) (Potyviridae, potyvirus)</i>  <i>Desmodium yellow mottle virus (DYMV) (Tymovirus)</i>  <i>Digitaria streak virus (DSV) (Geminiviridae, monogeminivirus)</i>  <i>Digitaria striate mosaic (DiSMV) (Geminiviridae, monogeminivirus)</i>  <i>Dioscorea alata virus (Potyviridae, potyvirus)</i>  <i>Dioscorea bacilliform virus (DBV) ((Caulimoviridae, badnavirus)</i>  <i>Dioscorea green banding mosaic virus (Potyviridae, potyvirus)</i>  <i>Dodonaea yellows-associated virus</i>  <i>Dolichos yellow mosaic virus (DoMYV) (Geminiviridae, bigeminivirus)</i>  <i>Dulcamara mottle virus (DuMV) (Tymovirus)</i>  <i>Eggplant green mosaic virus (EGMV) (Potyviridae, potyvirus)</i>  <i>Eggplant mottled dwarf virus (EMDV) (Rhabdoviridae, nucleorhabdovirus)</i>  <i>Elderberry virus (EV)(Carlavirus 1)</i>  <i>Epirus cherry virus (EpCV) (Ourmiavirus)</i>  <i>Erysimum latent virus (ErLV) (Tymovirus)</i>  <i>Dulcamara mottle virus (DuMV) (Tymovirus)</i>  <i>Echinochloa ragged stunt virus (ERSV) (Reoviridae, Oryzavirus)</i>  <i>Elm mottle virus (EMoV) (Bromoviridae, Ilarvirus)</i>  <i>European wheat striate mosaic virus (EWSMV) (Tenuivirus)</i>  <i>Euphorbia mosaic virus (EuMV) (Geminiviridae, bigeminivirus)</i>  <i>Euphorbia ringspot virus (EuRV) (Potyviridae, potyvirus)</i>  <i>Hop stunt viroid (HpSVd) (Hostuviroid, Pospiviroidae)</i>  <i>Hordeum mosaic virus (HoMV) (Potyviridae, Potyvirus)</i>  <i>Humulus japonicus virus (HJV) (Bromoviridae, ilarvirus)</i>  <i>Hyacinth mosaic virus (HyaMV) (Potyviridae, Potyvirus)</i>  <i>Hydrangea mosaic virus (HdMV) (Bromoviridae, ilarvirus)</i>  <i>Hydrangea ringspot virus (HRSV) (Potexvirus)</i>  <i>Horsegram yellow mosaic virus (HgYMV) (Geminiviridae, Begomovirus)</i>  <i>Iris fulva mosaic virus (IFMV) (Potyviridae, Potyvirus)</i>  <i>Iris Japanese necrotic ring virus</i>  <i>Iris mild mosaic virus (IMMV) (Potyviridae, Potyvirus)</i>  <i>Iris severe mosaic virus (ISMV) (Potyviridae, Potyvirus)</i>  <i>Impatiens necrotic spot virus (INSV) (Bunyaviridae, Tospovirus)</i></p>	<p><i>Dandelion yellow mosaic virus (DaYMV) (Sequiviridae, sequivirus)</i>  <i>Daphne virus X (DVX) (Potexvirus)</i>  <i>Daphne virus Y (DVY) (Potyviridae, potyvirus)</i>  <i>Datura Colombian virus (CDV) (Potyviridae, potyvirus)</i>  <i>Datura distortion mosaic virus (DDMV) (Potyviridae, potyvirus)</i>  <i>Datura necrosis virus ( DNV) (Potyviridae, potyvirus)</i>  <i>Datura shoestring virus (DSTV) (Potyviridae, potyvirus)</i>  <i>Datura yellow vein virus (DYVV) (Rhabdoviridae, nucleorhabdovirus)</i>  <i>Datura distortion virus</i>  <i>Datura enation mosaic virus</i>  <i>Dendrobium mosaic virus (DeMV) (Potyviridae, potyvirus)</i>  <i>Desmodium mosaic virus (DesMV) (Potyviridae, potyvirus)</i>  <i>Desmodium yellow mottle virus (DYMV) (Tymovirus)</i>  <i>Digitaria streak virus (DSV) (Geminiviridae, monogeminivirus)</i>  <i>Digitaria striate mosaic (DiSMV) (Geminiviridae, monogeminivirus)</i>  <i>Dioscorea alata virus (Potyviridae, potyvirus)</i>  <i>Dioscorea bacilliform virus (DBV) ((Caulimoviridae, badnavirus)</i>  <i>Dioscorea green banding mosaic virus (Potyviridae, potyvirus)</i>  <i>Dodonaea yellows-associated virus</i>  <i>Dolichos yellow mosaic virus (DoMYV) (Geminiviridae, bigeminivirus)</i>  <i>Dulcamara mottle virus (DuMV) (Tymovirus)</i>  <i>Eggplant green mosaic virus (EGMV) (Potyviridae, potyvirus)</i>  <i>Eggplant mottled dwarf virus (EMDV) (Rhabdoviridae, nucleorhabdovirus)</i>  <i>Elderberry virus (EV)(Carlavirus 1)</i>  <i>Epirus cherry virus (EpCV) (Ourmiavirus)</i>  <i>Erysimum latent virus (ErLV) (Tymovirus)</i>  <i>Dulcamara mottle virus (DuMV) (Tymovirus)</i>  <i>Echinochloa ragged stunt virus (ERSV) (Reoviridae, Oryzavirus)</i>  <i>Elm mottle virus (EMoV) (Bromoviridae, Ilarvirus)</i>  <i>European wheat striate mosaic virus (EWSMV) (Tenuivirus)</i>  <i>Euphorbia mosaic virus (EuMV) (Geminiviridae, bigeminivirus)</i>  <i>Euphorbia ringspot virus (EuRV) (Potyviridae, potyvirus)</i>  <i>Hop stunt viroid (HpSVd) (Hostuviroid, Pospiviroidae)</i>  <i>Hordeum mosaic virus (HoMV) (Potyviridae, Potyvirus)</i>  <i>Humulus japonicus virus (HJV) (Bromoviridae, ilarvirus)</i>  <i>Hyacinth mosaic virus (HyaMV) (Potyviridae, Potyvirus)</i>  <i>Hydrangea mosaic virus (HdMV) (Bromoviridae, ilarvirus)</i>  <i>Hydrangea ringspot virus (HRSV) (Potexvirus)</i>  <i>Horsegram yellow mosaic virus (HgYMV) (Geminiviridae, Begomovirus)</i>  <i>Iris fulva mosaic virus (IFMV) (Potyviridae, Potyvirus)</i>  <i>Iris Japanese necrotic ring virus</i>  <i>Iris mild mosaic virus (IMMV) (Potyviridae, Potyvirus)</i>  <i>Iris severe mosaic virus (ISMV) (Potyviridae, Potyvirus)</i>  <i>Impatiens necrotic spot virus (INSV) (Bunyaviridae, Tospovirus)</i></p>	
---	---	--

<p> <i>Indian peanut clump virus (PCV) (Pecluvirus)</i>  <i>Indonesian soybean dwarf virus (ISDV) (Luteoviridae, Enamovirus)</i>  <i>Iranian maize mosaic virus</i>  <i>Jatropha mosaic virus (JMV) (Geminiviridae, bigeminivirus)</i>  <i>Johnsongrass mosaic (JGMV) (Potyviridae, Potyvirus)</i>  <i>Kalanchoe isometric virus</i>  <i>Kalanchoe latent virus (KLV)(Carlavirus)</i>  <i>Kalanchoe top-spotting virus (KTSV) (Caulimoviridae, badnavirus)</i>  <i>Kennedya yellow mosaic virus (KYMV) (Tymovirus)</i>  <i>Kennedya virus Y (KVY) (Potyviridae, Potyvirus)</i>  <i>Kyuri green mottle mosaic virus (KGMMV) (Tobamovirus)</i>  <i>Konjac mosaic virus (KoMV) (Potyviridae, Potyvirus)</i>  <i>Kober stem grooving</i>  <i>Lamium mild mottle virus (LMMV) (Comoviridae, fabavirus)</i>  <i>Lato River virus (LRV) ((Tombusviridae, tombusvirus)</i>  <i>Leek yellow stripe virus (LYSV) (Potyviridae, potyvirus)</i>  <i>Lettuce big-vein virus (LBVV) (Varicosavirus)</i>  <i>Lettuce mosaic virus (LMV) (Potyviridae, potyvirus)</i>  <i>Lettuce necrotic yellows virus (LNYV)(Rhabdoviridae, cytorhabdovirus)</i>  <i>Lettuce speckles mottle virus (LSMV) (Umbravirus)</i>  <i>Lilac chlorotic leafspot virus (LCLV)(Capillovirus)</i>  <i>Lilac mottle virus (LiMV) (Carlavirus)</i>  <i>Lilac ring mottle virus (LRMV) (Bromoviridae, ilarvirus)</i>  <i>Lily mottle virus (LMoV) (Potyviridae, potyvirus)</i>  <i>Lily virus X (LVX) (Potexvirus)</i>  <i>Lettuce infectious yellows virus (LIYV) (Closteroviridae, Crinivirus)</i>  <i>Limabean golden mosaic virus (LGMV) (Geminiviridae, Begomovirus)</i>  <i>Little cherry virus (LChV) (Closteroviridae, Closterovirus)</i>  <i>LN33 stem grooving</i>  <i>Lucerne Australian symptomless virus (LASV) (Comoviridae, Nepovirus)</i>  <i>Lucerne vein yellowing virus</i>  <i>Lucerne transient streak virus (LTSV) (Sobemovirus)</i>  <i>Lychnis ringspot virus (LRSV) (Hordeivirus)</i>  <i>Maclura mosaic virus (MacMV) (Potyviridae, macluravirus)</i>  <i>Maize chlorotic dwarf virus (MCDV) (Sequiviridae, waikavirus)</i>  <i>Maize chlorotic mottle virus (MCMV) (Tombusviridae, machlomovirus)</i>  <i>Maize dwarf mosaic virus (MDMV) (Potyviridae, potyvirus )</i>  <i>Maize line virus</i>  <i>Maize mosaic virus (MMV) (Rhabdoviridae, nucleorhabdovirus)</i>  <i>Maize rayado fino virus (MRFV) (Marafivirus)</i>  <i>Maize white line mosaic virus (MWLMV)</i>  <i>Maize mottle/chlorotic stunt virus</i>  <i>Maize rough dwarf virus (MRDV) (Reoviridae, Fijivirus)</i>  <i>Maize streak virus (MSV) (Genimiviridae, Mastrevirus)</i> </p>	<p> <i>Indian peanut clump virus (PCV) (Pecluvirus)</i>  <i>Indonesian soybean dwarf virus (ISDV) (Luteoviridae, Enamovirus)</i>  <i>Iranian maize mosaic virus</i>  <i>Jatropha mosaic virus (JMV) (Geminiviridae, bigeminivirus)</i>  <i>Johnsongrass mosaic (JGMV) (Potyviridae, Potyvirus)</i>  <i>Kalanchoe isometric virus</i>  <i>Kalanchoe latent virus (KLV)(Carlavirus)</i>  <i>Kalanchoe top-spotting virus (KTSV) (Caulimoviridae, badnavirus)</i>  <i>Kennedya yellow mosaic virus (KYMV) (Tymovirus)</i>  <i>Kennedya virus Y (KVY) (Potyviridae, Potyvirus)</i>  <i>Kyuri green mottle mosaic virus (KGMMV) (Tobamovirus)</i>  <i>Konjac mosaic virus (KoMV) (Potyviridae, Potyvirus)</i>  <i>Kober stem grooving</i>  <i>Lamium mild mottle virus (LMMV) (Comoviridae, fabavirus)</i>  <i>Lato River virus (LRV) ((Tombusviridae, tombusvirus)</i>  <i>Leek yellow stripe virus (LYSV) (Potyviridae, potyvirus)</i>  <i>Lettuce big-vein virus (LBVV) (Varicosavirus)</i>  <i>Lettuce mosaic virus (LMV) (Potyviridae, potyvirus)</i>  <i>Lettuce necrotic yellows virus (LNYV)(Rhabdoviridae, cytorhabdovirus)</i>  <i>Lettuce speckles mottle virus (LSMV) (Umbravirus)</i>  <i>Lilac chlorotic leafspot virus (LCLV)(Capillovirus)</i>  <i>Lilac mottle virus (LiMV) (Carlavirus)</i>  <i>Lilac ring mottle virus (LRMV) (Bromoviridae, ilarvirus)</i>  <i>Lily mottle virus (LMoV) (Potyviridae, potyvirus)</i>  <i>Lily virus X (LVX) (Potexvirus)</i>  <i>Lettuce infectious yellows virus (LIYV) (Closteroviridae, Crinivirus)</i>  <i>Limabean golden mosaic virus (LGMV) (Geminiviridae, Begomovirus)</i>  <i>Little cherry virus (LChV) (Closteroviridae, Closterovirus)</i>  <i>LN33 stem grooving</i>  <i>Lucerne Australian symptomless virus (LASV) (Comoviridae, Nepovirus)</i>  <i>Lucerne vein yellowing virus</i>  <i>Lucerne transient streak virus (LTSV) (Sobemovirus)</i>  <i>Lychnis ringspot virus (LRSV) (Hordeivirus)</i>  <i>Maclura mosaic virus (MacMV) (Potyviridae, macluravirus)</i>  <i>Maize chlorotic dwarf virus (MCDV) (Sequiviridae, waikavirus)</i>  <i>Maize chlorotic mottle virus (MCMV) (Tombusviridae, machlomovirus)</i>  <i>Maize dwarf mosaic virus (MDMV) (Potyviridae, potyvirus )</i>  <i>Maize line virus</i>  <i>Maize mosaic virus (MMV) (Rhabdoviridae, nucleorhabdovirus)</i>  <i>Maize rayado fino virus (MRFV) (Marafivirus)</i>  <i>Maize white line mosaic virus (MWLMV)</i>  <i>Maize mottle/chlorotic stunt virus</i>  <i>Maize rough dwarf virus (MRDV) (Reoviridae, Fijivirus)</i>  <i>Maize streak virus (MSV) (Genimiviridae, Mastrevirus)</i> </p>	
--	--	--

<p><i>Malvastrum mottle virus</i>  <i>Malva vein clearing virus (MVCV) (Potyviridae, potyvirus)</i>  <i>Marigold mottle virus (MaMoV) (Potyviridae, potyvirus)</i>  <i>Melandrium yellow fleck virus (MYFV) (Bromoviridae, bromovirus)</i>  <i>Melon leaf curl virus(MLCV) (Geminiviridae, bigeminivirus)</i>  <i>Melon necrotic spot virus (MNSV) (Tombusviridae, carmovirus)</i>  <i>Melon Ourmia virus (OuMV) (Ourmiavirus)</i>  <i>Melon rugose mosaic virus (MRMV) (Tymovirus)</i>  <i>Milk vetch dwarf virus (MDV) (Nanovirus)</i>  <i>Mimosa mosaic virus</i>  <i>Mirabilis mosaic virus (MiMV) (Caulimovirus)</i>  <i>Miscanthus streak virus (MiSV) (Geminiviridae, monogeminivirus)</i>  <i>Mulberry latent virus (MLV) (Carlavirus)</i>  <i>Mulberry ringspot virus (MRSV)( Comoviridae, nepovirus)</i>  <i>Mung bean yellow mosaic virus (MYMV) (Geminiviridae, bigeminivirus)</i>  <i>Muskmelon vein necrosis virus (MuVNV)(Carlavirus)</i>  <i>Myrobalan latent ringspot virus (MLRSV) (Comoviridae, nepovirus)</i>  <i>Narcissus latent virus (NLV)(Potyviridae, macluravirus)</i>  <i>Narcissus mosaic virus (NMV) (Potexvirus)</i>  <i>Narcissus yellow stripe virus (Potyviridae, potyvirus)</i>  <i>Natsudaidai dwarf virus (NDV) (Sadwavirus)</i>  <i>Neckar River virus (NRV) (Tombusviridae, tombusvirus)</i>  <i>Nerine latent virus (NeLV) (Carlavirus)</i>  <i>Nerine virus (NV) (Potyviridae, potyvirus)</i>  <i>Nerine virus X(NVX) (Potexvirus )</i>  <i>Northern cereal mosaic virus (NCMV) (Rhabdoviridae, Cytorhabdovirus)</i>  <i>Oak ringspot virus</i>  <i>Oat blue dwarf virus (OBDV) (Marafivirus)</i>  <i>Oat golden stripe virus (OGSV) (Furovirus)</i>  <i>Oat mosaic virus (OMV)(Potyviridae, bymovirus)</i>  <i>Oat necrotic mottle virus (ONMV) (Potyviridae, rymovirus)</i>  <i>Oat red streak mosaic virus</i>  <i>Oat sterile dwarf virus (OSDV) (Reoviridae, Fijivirus)</i>  <i>Okra leaf-curl virus(OLCV) (Geminivirus, bigeminivirus)</i>  <i>Okra mosaic virus (OkMV) (Tymovirus)</i>  <i>Olive latent ringspot virus (OLRSV) (Comoviridae, nepovirus)</i>  <i>Ononis yellow mosaic virus ( OYMV)(Tymovirus)</i>  <i>Opuntia Sammons' virus (SOV) (Tobamovirus)</i>  <i>Pangola stunt virus (PaSV)(Reoviridae, Fijivirus)</i>  <i>Panicum streak virus (PanSV) (Geminiviridae, monogeminivirus)</i>  <i>Papaya leaf curl virus (PaLCuV) (Begomovirus, Geminiviridae)</i>  <i>Papaya meleira virus (PMeV)</i>  <i>Papaya mosaic virus (PapMV) (Potexvirus, Flexiviridae)</i>  <i>Paprika mild mottle virus (PaMMV) (Tobamovirus)</i></p>	<p><i>Malvastrum mottle virus</i>  <i>Malva vein clearing virus (MVCV) (Potyviridae, potyvirus)</i>  <i>Marigold mottle virus (MaMoV) (Potyviridae, potyvirus)</i>  <i>Melandrium yellow fleck virus (MYFV) (Bromoviridae, bromovirus)</i>  <i>Melon leaf curl virus(MLCV) (Geminiviridae, bigeminivirus)</i>  <i>Melon necrotic spot virus (MNSV) (Tombusviridae, carmovirus)</i>  <i>Melon Ourmia virus (OuMV) (Ourmiavirus)</i>  <i>Melon rugose mosaic virus (MRMV) (Tymovirus)</i>  <i>Milk vetch dwarf virus (MDV) (Nanovirus)</i>  <i>Mimosa mosaic virus</i>  <i>Mirabilis mosaic virus (MiMV) (Caulimovirus)</i>  <i>Miscanthus streak virus (MiSV) (Geminiviridae, monogeminivirus)</i>  <i>Mulberry latent virus (MLV) (Carlavirus)</i>  <i>Mulberry ringspot virus (MRSV)( Comoviridae, nepovirus)</i>  <i>Mung bean yellow mosaic virus (MYMV) (Geminiviridae, bigeminivirus)</i>  <i>Muskmelon vein necrosis virus (MuVNV)(Carlavirus)</i>  <i>Myrobalan latent ringspot virus (MLRSV) (Comoviridae, nepovirus)</i>  <i>Narcissus latent virus (NLV)(Potyviridae, macluravirus)</i>  <i>Narcissus mosaic virus (NMV) (Potexvirus)</i>  <i>Narcissus yellow stripe virus (Potyviridae, potyvirus)</i>  <i>Natsudaidai dwarf virus (NDV) (Sadwavirus)</i>  <i>Neckar River virus (NRV) (Tombusviridae, tombusvirus)</i>  <i>Nerine latent virus (NeLV) (Carlavirus)</i>  <i>Nerine virus (NV) (Potyviridae, potyvirus)</i>  <i>Nerine virus X(NVX) (Potexvirus )</i>  <i>Northern cereal mosaic virus (NCMV) (Rhabdoviridae, Cytorhabdovirus)</i>  <i>Oak ringspot virus</i>  <i>Oat blue dwarf virus (OBDV) (Marafivirus)</i>  <i>Oat golden stripe virus (OGSV) (Furovirus)</i>  <i>Oat mosaic virus (OMV)(Potyviridae, bymovirus)</i>  <i>Oat necrotic mottle virus (ONMV) (Potyviridae, rymovirus)</i>  <i>Oat red streak mosaic virus</i>  <i>Oat sterile dwarf virus (OSDV) (Reoviridae, Fijivirus)</i>  <i>Okra leaf-curl virus(OLCV) (Geminivirus, bigeminivirus)</i>  <i>Okra mosaic virus (OkMV) (Tymovirus)</i>  <i>Olive latent ringspot virus (OLRSV) (Comoviridae, nepovirus)</i>  <i>Ononis yellow mosaic virus ( OYMV)(Tymovirus)</i>  <i>Opuntia Sammons' virus (SOV) (Tobamovirus)</i>  <i>Pangola stunt virus (PaSV)(Reoviridae, Fijivirus)</i>  <i>Panicum streak virus (PanSV) (Geminiviridae, monogeminivirus)</i>  <i>Papaya leaf curl virus (PaLCuV) (Begomovirus, Geminiviridae)</i>  <i>Papaya meleira virus (PMeV)</i>  <i>Papaya mosaic virus (PapMV) (Potexvirus, Flexiviridae)</i>  <i>Paprika mild mottle virus (PaMMV) (Tobamovirus)</i></p>	
--	--	--

<p><i>Parietaria mottle virus (PmoV)(Bromoviridae, ilarvirus)</i>  <i>Parsnip leafcurl virus</i>  <i>Parsnip mosaic virus (ParMV)</i>  <i>Parsnip yellow fleck virus (PYFV)(Sequiviridae, sequivirus)</i>  <i>Paspalum striate mosaic virus (PSMV)(Geminiviridae, monogeminivirus)</i>  <i>Passiflora latent virus (PLV)(Carlavirus)</i>  <i>Passiflora South African virus (Potyviridae, potyvirus)</i>  <i>Passiflora ringspot virus (PFRSV) (Potyviridae, potyvirus)</i>  <i>Passionfruit woodiness virus (PWV) (Potyviridae, potyvirus)</i>  <i>Passionfruit yellow mosaic virus (PaYMV)(Tymovirus)</i>  <i>Patchouli mosaic virus (Potyviridae, potyvirus)</i>  <i>Pea early browning virus (PEBV) (Tobravirus)</i>  <i>Pea enation mosaic virus-1 (PEMV-1) (Luteovirus)</i>  <i>Pea enation mosaic virus-2 (PEMV-2) (Umbravirus)</i>  <i>Pea mild mosaic virus (PmiMV) (Comoviridae, comovirus )</i>  <i>Pea mosaic virus (Potyviridae, potyvirus)</i>  <i>Peanut chlorotic streak virus (PCSV) (Caulimoviridae, caulimovirus)</i>  <i>Peanut green mosaic virus (Potyviridae, potyvirus)</i>  <i>Peanut stunt virus (PSV) (Bromoviridae, cucumovirus)</i>  <i>Peanut yellow spot virus (PeYMV) (Tospovirus)</i>  <i>Peach American mosaic virus</i>  <u><i>Peach latent mosaic viroid(PLMVd)</i></u>  <i>Peach mosaic virus (PMV) (Trichovirus)</i>  <i>Peach rosette mosaic virus (PRMV) (Comoviridae, Nepovirus)</i>  <i>Peanut clump virus (PCV) (Pecluvirus)</i>  <i>Pear blister canker viroid (PBCVd) (Pospiviroidae, Apscavirioid)</i>  <i>Pear necrotic spot virus</i>  <i>Pepino mosaic virus (PepMV) (Flexiviridae, Potexvirus)</i>  <i>Pineapple bacilliform virus (PBV) (Badnavirus, Caulimoviridae)</i>  <i>Pineapple mealybug wilt-associated virus-1 (PMWaV-1) (Ampelovirus, Closteroviridae)</i>  <i>Pineapple mealybug wilt-associated virus-2 (PMWaV-2) (Ampelovirus, Closteroviridae)</i>  <i>Plantago asiatica mosaic virus</i>  <i>Plum American line pattern virus (APLPV) ( ilarvirus, Bromoviridae)</i>  <i>Plum bark split virus</i>  <i>Plum pox virus (PPV) (Potyviridae, Potyvirus)</i>  <i>Plum rusty blotch</i>  <i>Potato black ringspot virus (PBRSV) (Comoviridae, Nepovirus)</i>  <i>Potato deforming mosaic virus</i>  <i>Potato mop-top virus (PMTV) (Pomovirus)</i>  <i>Potato spindle tuber viroid (PSTVd) (Pospiviroidae, Pospiviroid)</i>  <i>Potato virus T (PVT) (Trichovirus)</i>  <i>Potato virus U (PVU) (Comoviridae, Nepovirus)</i></p>	<p><i>Parietaria mottle virus (PmoV)(Bromoviridae, ilarvirus)</i>  <i>Parsnip leafcurl virus</i>  <i>Parsnip mosaic virus (ParMV)</i>  <i>Parsnip yellow fleck virus (PYFV)(Sequiviridae, sequivirus)</i>  <i>Paspalum striate mosaic virus (PSMV)(Geminiviridae, monogeminivirus)</i>  <i>Passiflora latent virus (PLV)(Carlavirus)</i>  <i>Passiflora South African virus (Potyviridae, potyvirus)</i>  <i>Passiflora ringspot virus (PFRSV) (Potyviridae, potyvirus)</i>  <i>Passionfruit woodiness virus (PWV) (Potyviridae, potyvirus)</i>  <i>Passionfruit yellow mosaic virus (PaYMV)(Tymovirus)</i>  <i>Patchouli mosaic virus (Potyviridae, potyvirus)</i>  <i>Pea early browning virus (PEBV) (Tobravirus)</i>  <i>Pea enation mosaic virus-1 (PEMV-1) (Luteovirus)</i>  <i>Pea enation mosaic virus-2 (PEMV-2) (Umbravirus)</i>  <i>Pea mild mosaic virus (PmiMV) (Comoviridae, comovirus )</i>  <i>Pea mosaic virus (Potyviridae, potyvirus)</i>  <i>Peanut chlorotic streak virus (PCSV) (Caulimoviridae, caulimovirus)</i>  <i>Peanut green mosaic virus (Potyviridae, potyvirus)</i>  <i>Peanut stunt virus (PSV) (Bromoviridae, cucumovirus)</i>  <i>Peanut yellow spot virus (PeYMV) (Tospovirus)</i>  <i>Peach American mosaic virus</i>    <i>Peach mosaic virus (PMV) (Trichovirus)</i>  <i>Peach rosette mosaic virus (PRMV) (Comoviridae, Nepovirus)</i>  <i>Peanut clump virus (PCV) (Pecluvirus)</i>  <i>Pear blister canker viroid (PBCVd) (Pospiviroidae, Apscavirioid)</i>  <i>Pear necrotic spot virus</i>  <i>Pepino mosaic virus (PepMV) (Flexiviridae, Potexvirus)</i>  <i>Pineapple bacilliform virus (PBV) (Badnavirus, Caulimoviridae)</i>  <i>Pineapple mealybug wilt-associated virus-1 (PMWaV-1) (Ampelovirus, Closteroviridae)</i>  <i>Pineapple mealybug wilt-associated virus-2 (PMWaV-2) (Ampelovirus, Closteroviridae)</i>  <i>Plantago asiatica mosaic virus</i>  <i>Plum American line pattern virus (APLPV) ( ilarvirus, Bromoviridae)</i>  <i>Plum bark split virus</i>  <i>Plum pox virus (PPV) (Potyviridae, Potyvirus)</i>  <i>Plum rusty blotch</i>  <i>Potato black ringspot virus (PBRSV) (Comoviridae, Nepovirus)</i>  <i>Potato deforming mosaic virus</i>  <i>Potato mop-top virus (PMTV) (Pomovirus)</i>  <i>Potato spindle tuber viroid (PSTVd) (Pospiviroidae, Pospiviroid)</i>  <i>Potato virus T (PVT) (Trichovirus)</i>  <i>Potato virus U (PVU) (Comoviridae, Nepovirus)</i></p>	
---	--	--

<p><i>Potato virus V (PVV) (Potyviridae, Potyvirus)</i>  <i>Potato yellow dwarf virus (PYDV) (Rhabdoviridae, Nucleorhabdovirus)</i>  <i>Potato yellow vein virus (PYVV) (Closteroviridae, Crinivirus)</i>  <i>Potato yellowing virus</i>  <i>Prune dwarf virus (PDV) (Bromoviridae, Ilarvirus)</i>  <i>Prunus necrotic ringspot virus (PNRSV) (Bromoviridae, Ilarvirus)</i>  <i>Raspberry leaf curl virus</i>  <i>Raspberry ringspot virus (RpRSV) (Comoviridae, Nepovirus)</i>  <i>Red clover mottle virus (RCMV) (Comoviridae, Comovirus)</i>  <i>Rice gall dwarf virus (RGDV) (Reoviridae, Phytoreovirus)</i>  <i>Rice tungro bacilliform virus (RTBV) (Caulimoviridae, Rice tungro bacilliform-like virus)</i>  <i>Rice tungro spherical virus (RTSV) (Sequiviridae, Waikavirus)</i>  <i>Rice yellow mottle virus (RYMV) (Sobemovirus)</i>  <i>Rupestris stem pitting-associated virus (Foveavirus, Flexiviridae)</i>  <i>Squash leaf curl virus (SLCV) (Geminiviridae, Begomovirus)</i>  <i>Squash mosaic virus (SqMV) (Comoviridae, Comovirus)</i>  <i>Strawberry latent ringspot virus (SLRSV) (Sadwavirus)</i>  <i>Strawberry veinbanding virus (SVBV) (Caulimoviridae, Caulimovirus)</i>  <i>Sugarcane yellow leaf virus (ScYLV) (Polerovirus, Luteoviridae)</i>  <i>Tomato black ring virus (TBRV) (Comoviridae, Nepovirus)</i>  <i>Tobacco rattle virus (TRV) (Tobravirus)</i>  <i>Tobacco ringspot virus (TRSV) (Comoviridae, Nepovirus)</i>  <i>Tobacco mosaic virus (TMV) (Tobamovirus)</i>  <i>Tobacco streak virus (TSV) ( Ilarvirus, Bromoviridae)</i>  <i>Tomato bushy stunt virus (TBSV) (Tombusvirus, Tombusviridae)</i>  <i>Tomato mottle virus (ToMoV) (Geminiviridae, Begomovirus)</i>  <i>Tomato ringspot virus (ToRSV) (Comoviridae, Nepovirus)</i>  <i>Tomato yellow leaf curl virus (TYLCV) (Geminiviridae, Begomovirus)</i>  <i>Tulare apple mosaic virus (TAMV) (Ilarvirus, Bromoviridae)</i>  <i>Ullucus virus C (UVC)(Comoviridae,comovirus)</i>  <i>Ullucus mild mottle virus (UMMV)(Tobamovirus)</i>  <i>Ullucus mosaic virus (UMV) (Potyviridae,potyvirus)</i>  <i>Urd bean leaf crinkle virus</i>  <i>Vallota mosaic virus (ValMV) (Potyviridae,potyvirus)</i>  <i>Vanilla mosaic virus (VanMV) (Potyviridae, potyvirus)</i>  <i>Vanilla necrosis virus(Potyviridae, potyvirus)</i>  <i>Velvet tobacco mottle virus (VTMoV)(Sobemovirus)</i>  <i>Viola mottle virus (VMV)(Potexvirus)</i>  <i>Voandzeia distortion mosaic virus (Potyviridae, potyvirus)</i>  <i>Voandzeia necrotic mosaic virus (VNMV) (Tymovirus)</i>  <i>Watercress yellow spot virus (WYSV)</i>  <i>Watermelon chlorotic stunt virus (WmCSV)(Geminiviridae,bigeminivirus)</i>  <i>Watermelon curly mottle virus (WmCMV)(Geminiviridae, bigeminivirus)</i></p>	<p><i>Potato virus V (PVV) (Potyviridae, Potyvirus)</i>  <i>Potato yellow dwarf virus (PYDV) (Rhabdoviridae, Nucleorhabdovirus)</i>  <i>Potato yellow vein virus (PYVV) (Closteroviridae, Crinivirus)</i>  <i>Potato yellowing virus</i>  <i>Prune dwarf virus (PDV) (Bromoviridae, Ilarvirus)</i>  <i>Prunus necrotic ringspot virus (PNRSV) (Bromoviridae, Ilarvirus)</i>  <i>Raspberry leaf curl virus</i>  <i>Raspberry ringspot virus (RpRSV) (Comoviridae, Nepovirus)</i>  <i>Red clover mottle virus (RCMV) (Comoviridae, Comovirus)</i>  <i>Rice gall dwarf virus (RGDV) (Reoviridae, Phytoreovirus)</i>  <i>Rice tungro bacilliform virus (RTBV) (Caulimoviridae, Rice tungro bacilliform-like virus)</i>  <i>Rice tungro spherical virus (RTSV) (Sequiviridae, Waikavirus)</i>  <i>Rice yellow mottle virus (RYMV) (Sobemovirus)</i>  <i>Rupestris stem pitting-associated virus (Foveavirus, Flexiviridae)</i>  <i>Squash leaf curl virus (SLCV) (Geminiviridae, Begomovirus)</i>  <i>Squash mosaic virus (SqMV) (Comoviridae, Comovirus)</i>  <i>Strawberry latent ringspot virus (SLRSV) (Sadwavirus)</i>  <i>Strawberry veinbanding virus (SVBV) (Caulimoviridae, Caulimovirus)</i>  <i>Sugarcane yellow leaf virus (ScYLV) (Polerovirus, Luteoviridae)</i>  <i>Tomato black ring virus (TBRV) (Comoviridae, Nepovirus)</i>  <i>Tobacco rattle virus (TRV) (Tobravirus)</i>  <i>Tobacco ringspot virus (TRSV) (Comoviridae, Nepovirus)</i>  <i>Tobacco mosaic virus (TMV) (Tobamovirus)</i>  <i>Tobacco streak virus (TSV) ( Ilarvirus, Bromoviridae)</i>  <i>Tomato bushy stunt virus (TBSV) (Tombusvirus, Tombusviridae)</i>  <i>Tomato mottle virus (ToMoV) (Geminiviridae, Begomovirus)</i>  <i>Tomato ringspot virus (ToRSV) (Comoviridae, Nepovirus)</i>  <i>Tomato yellow leaf curl virus (TYLCV) (Geminiviridae, Begomovirus)</i>  <i>Tulare apple mosaic virus (TAMV) (Ilarvirus, Bromoviridae)</i>  <i>Ullucus virus C (UVC)(Comoviridae,comovirus)</i>  <i>Ullucus mild mottle virus (UMMV)(Tobamovirus)</i>  <i>Ullucus mosaic virus (UMV) (Potyviridae,potyvirus)</i>  <i>Urd bean leaf crinkle virus</i>  <i>Vallota mosaic virus (ValMV) (Potyviridae,potyvirus)</i>  <i>Vanilla mosaic virus (VanMV) (Potyviridae, potyvirus)</i>  <i>Vanilla necrosis virus(Potyviridae, potyvirus)</i>  <i>Velvet tobacco mottle virus (VTMoV)(Sobemovirus)</i>  <i>Viola mottle virus (VMV)(Potexvirus)</i>  <i>Voandzeia distortion mosaic virus (Potyviridae, potyvirus)</i>  <i>Voandzeia necrotic mosaic virus (VNMV) (Tymovirus)</i>  <i>Watercress yellow spot virus (WYSV)</i>  <i>Watermelon chlorotic stunt virus (WmCSV)(Geminiviridae,bigeminivirus)</i>  <i>Watermelon curly mottle virus (WmCMV)(Geminiviridae, bigeminivirus)</i></p>	
--	--	--



<p>Watermelon mosaic virus 2(WMV-2) (<i>Potyviridae, potyvirus</i>)  Wheat American striate mosaic virus (WASMV)(<i>Rhabdovirus, ucleorhabdovirus</i>)  Wheat yellow leaf virus (WYLV) (<i>Closteroviridae, Closterovirus</i>)  Wheat dwarf virus (WDV) (<i>Geminiviridae, monogeminivirus</i>)  Wheat soil-borne mosaic virus (SBWMV)(<i>Furovirus</i>)  Wheat streak mosaic virus (WSMV)(<i>Potyviridae, rymovirus</i>)  Wheat spindle streak mosaic virus (WSSMV) (<i>Potyviridae, bymovirus</i>)  Wheat yellow mosaic virus (WYMV)(<i>Potyviridae, bymovirus</i>)  White clover mosaic virus(WCLMV )(Potexvirus)  Wild cucumber mosaic virus (WCMV )(Tymovirus)  Wild potato mosaic (WPMV ) (<i>Potyviridae, Potyvirus</i>)  Wineberry latent virus (WLV)  Wisteria vein mosaic virus (WVMV) (<i>Potyviridae, Potyvirus</i>)  Yam mosaic virus (YMV) (<i>Potyviridae, Potyvirus</i>)  Zucchini yellow fleck virus (ZYFV) (<i>Potyviridae, Potyvirus</i>)  備註：以上病毒之媒介有害生物亦一併列入管制</p> <p>線蟲類 (54 種)  <i>Anguina tritici</i>  <i>Aphelenchoides aradhidis</i>  <i>Aphelenchoides bicaudatus</i>  <i>Aphelenchoides fragariae</i>  <i>Aphelenchoides goodeyi</i>  <i>Aphelenchoides ritzemabosi</i>  <i>Aphelenchoides suipingensis</i>  <i>Belonolaimus gracilis</i>  <i>Belonolaimus longicaudatus</i>  <i>Bursaphelenchus muconatus</i>  <i>Bursaphelenchus xylophilus</i>  <i>Ditylenchus triformis</i>  <i>Dolichodorus heterocephalus</i>  <i>Globodera pallida</i>  <i>Globodera tabacum</i>  <i>Hemicycliophora arenaria</i>  <i>Hemicycliophora nudata</i>  <i>Heterodera glycines</i>  <i>Heterodera goettingiana</i>  <i>Heterodera sacchari</i>  <i>Heterodera schachtii</i>  <i>Heterodera zaeae</i>  <i>Hirschmanniella gracilis</i>  <i>Hirschmanniella imamuri</i>  <i>Hirschmanniella magna</i>  <i>Hirschmanniella miticausa</i></p>	<p>Watermelon mosaic virus 2(WMV-2) (<i>Potyviridae, potyvirus</i>)  Wheat American striate mosaic virus (WASMV)(<i>Rhabdovirus, ucleorhabdovirus</i>)  Wheat yellow leaf virus (WYLV) (<i>Closteroviridae, Closterovirus</i>)  Wheat dwarf virus (WDV) (<i>Geminiviridae, monogeminivirus</i>)  Wheat soil-borne mosaic virus (SBWMV)(<i>Furovirus</i>)  Wheat streak mosaic virus (WSMV)(<i>Potyviridae, rymovirus</i>)  Wheat spindle streak mosaic virus (WSSMV) (<i>Potyviridae, bymovirus</i>)  Wheat yellow mosaic virus (WYMV)(<i>Potyviridae, bymovirus</i>)  White clover mosaic virus(WCLMV )(Potexvirus)  Wild cucumber mosaic virus (WCMV )(Tymovirus)  Wild potato mosaic (WPMV ) (<i>Potyviridae, Potyvirus</i>)  Wineberry latent virus (WLV)  Wisteria vein mosaic virus (WVMV) (<i>Potyviridae, Potyvirus</i>)  Yam mosaic virus (YMV) (<i>Potyviridae, Potyvirus</i>)  Zucchini yellow fleck virus (ZYFV) (<i>Potyviridae, Potyvirus</i>)  備註：以上病毒之媒介有害生物亦一併列入管制</p> <p>線蟲類 (54 種)  <i>Anguina tritici</i>  <i>Aphelenchoides aradhidis</i>  <i>Aphelenchoides bicaudatus</i>  <i>Aphelenchoides fragariae</i>  <i>Aphelenchoides goodeyi</i>  <i>Aphelenchoides rizemabosi</i>  <i>Aphelenchoides suipingensis</i>  <i>Belonolaimus gracilis</i>  <i>Belonolaimus longicaudatus</i>  <i>Bursaphelenchus muconatus</i>  <i>Bursaphelenchus xylophilus</i>  <i>Ditylenchus triformis</i>  <i>Dolichodorus heterocephalus</i>  <i>Globodera pallida</i>  <i>Globodera tabacum</i>  <i>Hemicycliophora arenaria</i>  <i>Hemicycliophora nudata</i>  <i>Heterodera glycines</i>  <i>Heterodera goettingiana</i>  <i>Heterodera sacchari</i>  <i>Heterodera schachtii</i>  <i>Heterodera zaeae</i>  <i>Hirschmanniella gracilis</i>  <i>Hirschmanniella imamuri</i>  <i>Hirschmanniella magna</i>  <i>Hirschmanniella miticausa</i></p>	
--	---	--

<p><i>Hirschmanniella spinicaudata</i>  <i>Hoploaimus</i> spp.  <i>Longidorus elongatus</i>  <i>Longidorus jiangsuensis</i>  <i>Meloidogyne fugianensis</i>  <i>Meloidogyne kongi</i>  <i>Meloidogyne lini</i>  <i>Nacobbus aberrans</i>  <i>Paralongidorus</i> spp.  <i>Paratrichodorus minor</i>  <i>Paratrichodorus porosus</i>  <i>Pratylenchus convallariae</i>  <i>Pratylenchus goodeyi</i>  <i>Pratylenchus indicus</i>  <i>Pratylenchus laticauda</i>  <i>Pratylenchus penetrans</i>  <i>Pratylenchus pratensis</i>  <i>Pratylenchus vulnus</i>  <i>Pratylenchus zaeae</i>  <i>Radopholus citri</i>  <i>Rhadinaphelenchus cocophilus</i>  <i>Scutellonema bradys</i>  <i>Trichodorus</i> spp.  <i>Xiphinema bricolense</i>  <i>Xiphinema californicum</i>  <i>Xiphinema diversicaudatum</i>  <i>Xiphinema hunaniense</i>  <i>Xiphinema index</i></p> <p>細菌類 (56 種)  <i>Acidovorax avenae</i> subsp. <i>avenae</i>  <i>Agrobacterium larrymoorei</i>  <i>Agrobacterium tumefaciens</i>  <i>Agrobacterium vitis</i>  <i>Burkholderia andropogonis</i>  <i>Burkholderia caryophylli</i>  <i>Burkholderia gladioli</i> pv. <i>gladioli</i>  <i>Clavibacter michiganensis</i> subsp. <i>Indidiosus</i>  <i>Clavibacter michiganensis</i> subsp. <i>michiganensis</i>  <i>Clavibacter michiganensis</i> subsp. <i>Sepedonicus</i>  <i>Clavibacter michiganensis</i> subsp. <i>nebraskensis</i>  <i>Curtobacterium flaccumfaciens</i> subsp. <i>Flaccumfaciens</i>  <i>Curtobacterium flaccumfaciens</i> subsp. <i>poinsettiae</i>  <i>Erwinia carotovora</i> subsp. <i>atroseptica</i></p>	<p><i>Hirschmanniella spinicaudata</i>  <i>Hoploaimus</i> spp.  <i>Longidorus elongatus</i>  <i>Longidorus jiangsuensis</i>  <i>Meloidogyne fugianensis</i>  <i>Meloidogyne kongi</i>  <i>Meloidogyne lini</i>  <i>Nacobbus aberrans</i>  <i>Paralongidorus</i> spp.  <i>Paratrichodorus minor</i>  <i>Paratrichodorus porosus</i>  <i>Pratylenchus convallariae</i>  <i>Pratylenchus goodeyi</i>  <i>Pratylenchus indicus</i>  <i>Pratylenchus laticauda</i>  <i>Pratylenchus penetrans</i>  <i>Pratylenchus pratensis</i>  <i>Pratylenchus vulnus</i>  <i>Pratylenchus zaeae</i>  <i>Radopholus citri</i>  <i>Rhadinaphelenchus cocophilus</i>  <i>Scutellonema bradys</i>  <i>Trichodorus</i> spp.  <i>Xiphinema bricolense</i>  <i>Xiphinema californicum</i>  <i>Xiphinema diversicaudatum</i>  <i>Xiphinema hunaniense</i>  <i>Xiphinema index</i></p> <p>細菌類 (56 種)  <i>Acidovorax avenae</i> subsp. <i>avenae</i>  <i>Agrobacterium larrymoorei</i>  <i>Agrobacterium tumefaciens</i>  <i>Agrobacterium vitis</i>  <i>Burkholderia andropogonis</i>  <i>Burkholderia caryophylli</i>  <i>Burkholderia gladioli</i> pv. <i>gladioli</i>  <i>Clavibacter michiganensis</i> subsp. <i>Indidiosus</i>  <i>Clavibacter michiganensis</i> subsp. <i>michiganensis</i>  <i>Clavibacter michiganensis</i> subsp. <i>Sepedonicus</i>  <i>Clavibacter michiganensis</i> subsp. <i>nebraskensis</i>  <i>Curtobacterium flaccumfaciens</i> subsp. <i>Flaccumfaciens</i>  <i>Curtobacterium flaccumfaciens</i> subsp. <i>poinsettiae</i>  <i>Erwinia carotovora</i> subsp. <i>atroseptica</i></p>	
--	--	--

<p> <i>Erwinia chrysanthemi</i>  <i>Erwinia herbicola</i> pv. <i>gypsophilae</i>  <i>Erwinia pyrifoliae</i>  <i>Erwinia rhapontici</i>  <i>Erwinia salicis</i>  <i>Leifsonia xyli</i> subsp. <i>xyli</i> (原 <i>Clavibacter xyli</i> subsp. <i>xyli</i>)  <i>Liberobacter asiaticum</i>  <i>Pantoea stewartii</i>  <i>Potato leaflet stunt bacterium</i>  <i>Pseudomonas corrugate</i>  <i>Pseudomonas lignicola</i>  <i>Pseudomonas savastanoi</i> pv. <i>phaseolicola</i>  <i>Pseudomonas syringae</i> pv. <i>actinidiae</i>  <i>Pseudomonas syringae</i> pv. <i>eriobotryae</i>  <i>Pseudomonas syringae</i> pv. <i>maculicola</i>  <i>Pseudomonas syringae</i> pv. <i>morprunorum</i>  <i>Pseudomonas syringae</i> pv. <i>papulans</i>  <i>Pseudomonas syringae</i> pv. <i>pisi</i>  <i>Pseudomonas syringae</i> pv. <i>syringae</i>  <i>Pseudomonas syringae</i> pv. <i>tabaci</i>  <i>Pseudomonas viridiflava</i>  <i>Ralstonia solanacearum</i> Race3  <i>Xanthomonas acernea</i>  <i>Xanthomonas arboricola</i> pv. <i>corylina</i>  <i>Xanthomonas axonopodis</i> pv. <i>begoniae</i>  <i>Xanthomonas axonopodis</i> pv. <i>dieffenbachiae</i>  <i>Xanthomonas axonopodis</i> pv. <i>glycines</i>  <i>Xanthomonas axonopodis</i> pv. <i>phaseoli</i>  <i>Xanthomonas axonopodis</i> pv. <i>poinsettiicola</i>  <i>Xanthomonas axonopodis</i> pv. <i>vignicola</i>  <i>Xanthomonas axonopodis</i> pv. <i>vitians</i>  <i>Xanthomonas cucurbitae</i>  <i>Xanthomonas campestris</i> pv. <i>armoraciae</i>  <i>Xanthomonas campestris</i> pv. <i>Musacearum</i>  <i>Xanthomonas fragariae</i>  <i>Xanthomonas hortorum</i> pv. <i>carotae</i>  <i>Xanthomonas hortorum</i> pv. <i>perlargonii</i>  <i>Xanthomonas hyacinthi</i>  <i>Xanthomonas oryzae</i> pv. <i>oryzicola</i>  <i>Xanthomonas translucens</i> pv. <i>translucens</i>  <i>Xanthomonas theicola</i>  <i>Xanthomonas populi</i> </p>	<p> <i>Erwinia chrysanthemi</i>  <i>Erwinia herbicola</i> pv. <i>gypsophilae</i>  <i>Erwinia pyrifoliae</i>  <i>Erwinia rhapontici</i>  <i>Erwinia salicis</i>  <i>Leifsonia xyli</i> subsp. <i>xyli</i> (原 <i>Clavibacter xyli</i> subsp. <i>xyli</i>)  <i>Liberobacter asiaticum</i>  <i>Pantoea stewartii</i>  <i>Potato leaflet stunt bacterium</i>  <i>Pseudomonas corrugate</i>  <i>Pseudomonas lignicola</i>  <i>Pseudomonas savastanoi</i> pv. <i>phaseolicola</i>  <i>Pseudomonas syringae</i> pv. <i>actinidiae</i>  <i>Pseudomonas syringae</i> pv. <i>eriobotryae</i>  <i>Pseudomonas syringae</i> pv. <i>maculicola</i>  <i>Pseudomonas syringae</i> pv. <i>morprunorum</i>  <i>Pseudomonas syringae</i> pv. <i>papulans</i>  <i>Pseudomonas syringae</i> pv. <i>pisi</i>  <i>Pseudomonas syringae</i> pv. <i>syringae</i>  <i>Pseudomonas syringae</i> pv. <i>tabaci</i>  <i>Pseudomonas viridiflava</i>  <i>Ralstonia solanacearum</i> Race3  <i>Xanthomonas acernea</i>  <i>Xanthomonas arboricola</i> pv. <i>corylina</i>  <i>Xanthomonas axonopodis</i> pv. <i>begoniae</i>  <i>Xanthomonas axonopodis</i> pv. <i>dieffenbachiae</i>  <i>Xanthomonas axonopodis</i> pv. <i>glycines</i>  <i>Xanthomonas axonopodis</i> pv. <i>phaseoli</i>  <i>Xanthomonas axonopodis</i> pv. <i>poinsettiicola</i>  <i>Xanthomonas axonopodis</i> pv. <i>vignicola</i>  <i>Xanthomonas axonopodis</i> pv. <i>vitians</i>  <i>Xanthomonas cucurbitae</i>  <i>Xanthomonas campestris</i> pv. <i>armoraciae</i>  <i>Xanthomonas campestris</i> pv. <i>Musacearum</i>  <i>Xanthomonas fragariae</i>  <i>Xanthomonas hortorum</i> pv. <i>carotae</i>  <i>Xanthomonas hortorum</i> pv. <i>perlargonii</i>  <i>Xanthomonas hyacinthi</i>  <i>Xanthomonas oryzae</i> pv. <i>oryzicola</i>  <i>Xanthomonas translucens</i> pv. <i>translucens</i>  <i>Xanthomonas theicola</i>  <i>Xanthomonas populi</i> </p>	
--	--	--

<p>寄生性植物類 (13 種)</p> <p><i>Aeginetia indica</i></p> <p><i>Arceuthobium spp.</i></p> <p><i>Arceuthobium americanum</i></p> <p><i>Arceuthobium pusillum</i></p> <p><i>Conopholis spp.</i></p> <p><i>Cuscuta major</i></p> <p><i>Cuscuta japonica</i></p> <p><i>Cuscuta indicora</i></p> <p><i>Cuscuta planiflora</i></p> <p><i>Cuscuta campestris</i></p> <p><i>Orobanche spp.</i></p> <p><i>Phoradendron spp.</i></p> <p><i>Striga spp.</i></p>	<p>寄生性植物類 (12 種)</p> <p><i>Aeginetia indica</i></p> <p><i>Arceuthobium spp.</i></p> <p><i>Arceuthobium americanum</i></p> <p><i>Arceuthobium pusillum</i></p> <p><i>Conopholis striga</i></p> <p><i>Cuscuta major</i></p> <p><i>Cuscuta japonica</i></p> <p><i>Cuscuta indicora</i></p> <p><i>Cuscuta planiflora</i></p> <p><i>Cuscuta campestris</i></p> <p><i>Orobanche spp.</i></p> <p><i>Phoradendron spp.</i></p>	
--	--	--

## 中國大陸產櫻桃鮮果實輸入檢疫條件草案

規定	說明
一、自中國大陸輸入櫻桃 ( <i>Prunus avium</i> ) 鮮果實，除依據植物防疫檢疫法及相關檢疫規定辦理外，依本檢疫條件辦理。	規定自中國大陸輸入櫻桃應依本檢疫條件辦理。
二、本檢疫條件適用於中國大陸山東省產之櫻桃鮮果實。	本檢疫條件適用之櫻桃鮮果實產區。
<p>三、番石榴果實蠅 (<i>Bactrocera correcta</i>) 偵測及偵測發現後之處理措施</p> <p>(一) 每年四月至十月間應使用甲基丁香油及蛋白質水解物誘引劑之誘殺器進行番石榴果實蠅偵測。</p> <p>(二) 誘殺器應懸掛在供果園、包裝場、鮮果輸入港站與其附近批發市場及中國大陸植物檢疫機關(以下簡稱質檢總局)認為有可能引進番石榴果實蠅之地區。至少每二星期應更換誘引劑並調查一次，並應保有誘殺器分布圖及調查紀錄備查。</p> <p>(三) 質檢總局應於每年輸出作業開始前提供臺灣植物檢疫機關(以下簡稱防檢局)前一年度山東省番石榴果實蠅偵測紀錄。</p> <p>(四) 偵測發現番石榴果實蠅時，質檢總局應以發現番石榴果實蠅偵測點為中心設立緊急防治區，且應立即通知防檢局，並提供緊急防治區地理分布圖及標示防治區內之輸臺櫻桃供果園、包裝場、機場及海港等資料。</p> <p>(五) 緊急防治區內供果園生產之櫻桃暫停輸往臺灣，緊急防治區內之包裝場亦不得進行輸臺作業；緊急防治區以外生產之輸臺櫻桃於輸出檢疫合格簽發植物檢疫證明書時，須加註「該批櫻桃非產自緊急防治區且非於緊急防治區內包裝」。</p> <p>(六) 質檢總局應對緊急防治區採取番石榴果實蠅撲滅措施，並應通知防檢局其所採取措施及後續調查結果。緊急防</p>	規定偵測及偵測發現後之處理措施。

<p>治區自最後一次發現番石榴果實蠅起，再持續偵測已逾番石榴果實蠅三個世代之時間，而未再偵測到任何番石榴果實蠅時，質檢總局得通報防檢局要求解除緊急防治區，經防檢局認可後，始得解除並恢復緊急防治區內生產之櫻桃輸臺作業。</p>	
<p>四、供果園條件</p> <p>(一) 供果園應在質檢總局之指導下進行櫻桃有害生物防治，並特別針對臺灣關切之有害生物（如附錄）進行田間防治，並應保有防治紀錄備查。防治紀錄應包括生長季節使用所有化學藥劑的名稱、有效成分、使用日期及使用濃度等詳細資訊。</p> <p>(二) 每年四月至十月間，每一供果園應於田間懸掛使用甲基丁香油及蛋白質水解物誘引劑之兩種誘殺器，對番石榴果實蠅進行偵測，並應保有調查紀錄備查。偵測發現任何番石榴果實蠅時，質檢總局應依第三點規定進行後續處理。</p> <p>(三) 櫻桃採收前，每個供果園必須採樣送實驗室進行農藥殘留檢測，並應保有檢測紀錄備查。</p> <p>(四) 符合上述條件之輸臺櫻桃供果園應向質檢總局登錄，質檢總局應於每年輸臺作業開始前對所有登錄供果園實施檢查以確定符合本檢疫條件規定。</p> <p>(五) 質檢總局應於每年櫻桃輸臺作業開始前將合格供果園名單造冊並提供防檢局。供果園名單應包含供果園註冊編號、名稱及地址。</p>	<p>規定供果園條件。</p>
<p>五、包裝場條件</p> <p>(一) 包裝場應位在山東省境內。</p> <p>(二) 包裝場應建立完善的管理工作手冊，並具備充足光線、空間與設備及有害生物為害情形圖鑑，以進行櫻桃鮮果實之有害生物檢查工作。</p> <p>(三) 包裝場外應懸掛使用甲基丁香油及蛋</p>	<p>規定包裝場之條件。</p>

<p>白質水解物誘引劑之誘殺器，包裝場內櫻桃進場區、選果區、包裝區及包裝完成暫存區應設置黏蟲板或燈光誘殺器等非性費洛蒙之誘捕器以偵測番石榴果實蠅之發生。</p> <p>(四) 包裝場每年輸臺作業開始前及必要時應進行消毒。</p> <p>(五) 包裝場至少須有一名經訓練合格，可辨別果實蠅感染果之技術人員，該技術人員須參與輸臺櫻桃之選別作業。包裝場應保有該場技術人員訓練紀錄或資料備查。</p> <p>(六) 進行輸臺櫻桃包裝作業時，所有輸臺櫻桃須來自登錄之合格供果園；如場內同時貯放或處理非輸臺櫻桃，其與輸臺櫻桃須有適當區隔且不得同時進行包裝。</p> <p>(七) 輸臺櫻桃須經選別並剔除附帶土壤、受損、畸形及疑似有害生物為害之果實，並去除枝條、葉片、雜草種子或其他植物殘體。廢棄果須置於加蓋容器內並應每日移出包裝場外丟棄、處理或銷燬。</p> <p>(八) 符合條件之包裝場應向質檢總局登錄，質檢總局應於每年輸出季開始前對所有登錄包裝場實施檢查以確定符合本檢疫條件規定。</p> <p>(九) 質檢總局應於每年輸臺作業開始前將合格包裝場造冊並提供防檢局。包裝場造冊名單應包含包裝場註冊編號、名稱及地址。</p>	
<p>六、包裝及運輸</p> <p>(一) 輸臺櫻桃須使用全新乾淨的包裝材料進行包裝。</p> <p>(二) 每一包裝箱上須標明供果園與包裝場之名稱或註冊編號及生產地（市或縣）。</p> <p>(三) 輸臺櫻桃須採完全密封之包裝，或以密合之包裝箱包裝，如包裝箱有通氣孔，應在通氣孔上加設網孔小於一點</p>	<p>包裝及運輸之規定。</p>

<p>六公釐之防蟲紗網。</p>	
<p>七、輸出檢疫程序</p> <p>(一) 檢疫取樣數量為每批包裝數之百分之二以上。</p> <p>(二) 檢疫結果發現有活番石榴果實蠅及其他防檢局關切之有害生物，該批櫻桃不得輸臺。</p> <p>(三) 經檢疫合格之櫻桃，應於植物檢疫證明書上註明「經檢疫結果未染番石榴果實蠅、蘋果蠹蛾、桃蚜蛾、西方花薊馬及火傷病」，並加註供果園與包裝場之名稱或註冊編號及生產地（山東省）。採貨櫃運輸者，另須加註櫃號。</p>	<p>規定輸出檢疫程序。</p>
<p>八、輸入檢疫注意事項</p> <p>(一) 質檢總局簽發之植物檢疫證明書及其記載事項，應符合本檢疫條件規定。</p> <p>(二) 輸入檢疫程序方法及抽驗數量，依防檢局相關規定辦理。</p> <p>(三) 附帶土壤、枝葉、未檢附植物檢疫證明書或來自非合格登錄供果園和包裝場者，該批櫻桃不得輸入。</p>	<p>規定輸入檢疫注意事項。</p>
<p>九、檢出番石榴果實蠅之處置方式</p> <p>(一) 於包裝場及輸出檢疫檢出時</p> <ol style="list-style-type: none"> <li>1、若包裝場內偵測、包裝程序或輸出檢疫時發現活番石榴果實蠅時，依本檢疫條件第三點第四款至第六款規定辦理。</li> <li>2、前述發現活番石榴果實蠅之包裝場及供果園，所有已完成包裝、輸出檢疫及取得輸出植物檢疫證明書但尚未輸出之櫻桃鮮果實，均暫停輸臺。</li> </ol> <p>(二) 於輸入檢疫檢出時</p> <ol style="list-style-type: none"> <li>1、經檢疫如發現活番石榴果實蠅時，該批櫻桃應退運或銷燬，並取消該生產季生產該批櫻桃之供果園及包裝該批櫻桃包裝場之輸臺資格。防檢局將立即通知質檢總局全面暫停中國大陸櫻桃輸出。質檢總局應進</li> </ol>	<p>規定檢出番石榴果實蠅之處置方式。</p>



<p>行原因調查並將調查報告送交防檢局。</p> <p>2、防檢局於收到前述調查報告後，將進行評估以決定是否恢復櫻桃輸臺作業，必要時得派員赴中國大陸查證，所需費用由中國大陸負擔。</p>	
<p>十、產地查證</p> <p>(一) 正式貿易開始首年櫻桃生產季開始前二個月，質檢總局應提供當年度輸臺櫻桃供果園及包裝場名單，並邀請防檢局派員會同查證山東省番石榴果實蠅偵測作業、供果園與包裝場及櫻桃輸出檢疫作業，查證所需費用由中國大陸負擔。</p> <p>(二) 執行產地查證作業時，發現輸臺櫻桃供果園或包裝場不符本檢疫條件之重大缺失或問題時，防檢局應立即通知質檢總局，暫停前述供果園或包裝場之輸臺資格；涉及整個系統之重大缺失時，則暫停中國大陸櫻桃輸臺作業。質檢總局應進行原因調查及採取改善措施，調查及改善措施報告送交防檢局，經認可後始得恢復櫻桃供果園、包裝場之輸臺資格或櫻桃輸臺作業。</p>	<p>產地查證之規定。</p>
<p>十一、其他</p> <p>(一) 中國大陸櫻桃若有任何其他重要有害生物發生，足以影響臺灣農業生產安全時，臺方得隨時停止本檢疫條件之進行。</p> <p>(二) 根據中國大陸櫻桃疫情發生動態及有害生物截獲情況，防檢局將作進一步的風險評估，並與質檢總局協商，以調整檢疫性有害生物名單及相關檢疫措施。為確保有關風險管理措施和操作要求的有效落實，防檢局將在貿易開始後每五年對本檢疫條件執行情況進行回顧性審查，包括派專家赴中國大陸進行產地查證。根據產地查證情況，經雙方同意，對本檢疫條件進行</p>	<p>其他應遵行事項之規定。</p>

修正。	
<p>附錄、臺灣關切之櫻桃鮮果實檢疫有害生物</p> <ol style="list-style-type: none"> <li>1. 番石榴果實蠅 <i>Bactrocera correcta</i></li> <li>2. 蘋果蠹蛾 <i>Cydia pomonella</i></li> <li>3. 桃蚜蛾 <i>Anarsia lineatella</i></li> <li>4. 西方花薊馬 <i>Frankliniella occidentalis</i></li> <li>5. 火傷病 <i>Erwinia amylovora</i></li> <li>6. 棉褐帶捲葉蛾 <i>Adoxophyes orana</i></li> <li>7. 細菌性潰瘍病 <i>Pseudomonas syringae</i> pv. <i>syringae</i></li> <li>8. 櫻桃捲葉病毒 <i>Cherry leaf roll virus</i> (CLRV)</li> <li>9. 櫻桃退綠環斑病毒 <i>Prune dwarf virus</i> (PDV)</li> <li>10. 櫻桃壞死環斑病毒 <i>Prunus necrotic ringspot virus</i> (PNRSV)</li> <li>11. 桃蛀果蛾 <i>Carposina sasakii</i></li> <li>12. 褐腐病 <i>Monilinia fructicola</i></li> <li>13. 斑翅果蠅 <i>Drosophila suzukii</i></li> </ol>	<p>進行田間防治並應保有防治紀錄備查之有害生物。</p>